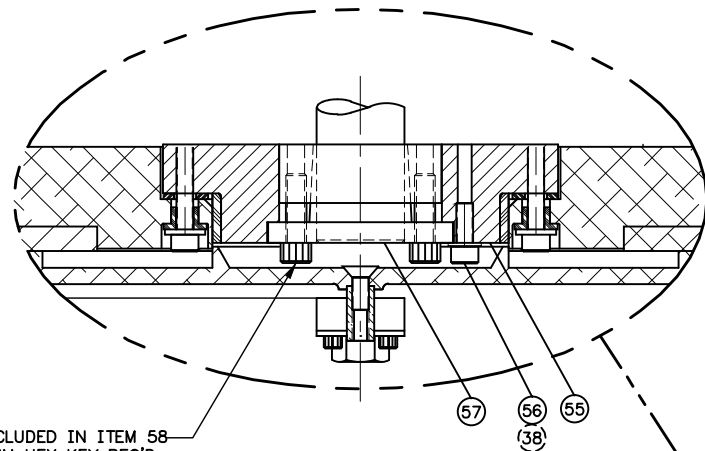




**HUB ASSEMBLY/ADJUSTMENT NOTES**

- 1.) SLIDE BUSHING, ITEM 58, INTO INSULATED HUB AS SHOWN.
- 2.) SECURE BUSHING TO HUB WITH (3) #10-32 SCREWS W/WASHERS, ITEMS 56 & 57.
- 3.) SLIDE PARTS ONTO SHAFT WITH BUSHING FLUSH W/SHAFT END.
- 4.) TIGHTEN (6) M6 SCREWS EVENLY IN AT LEAST (3) INCREASING TORQUE STEPS, 12 FT-LBS MAXIMUM.

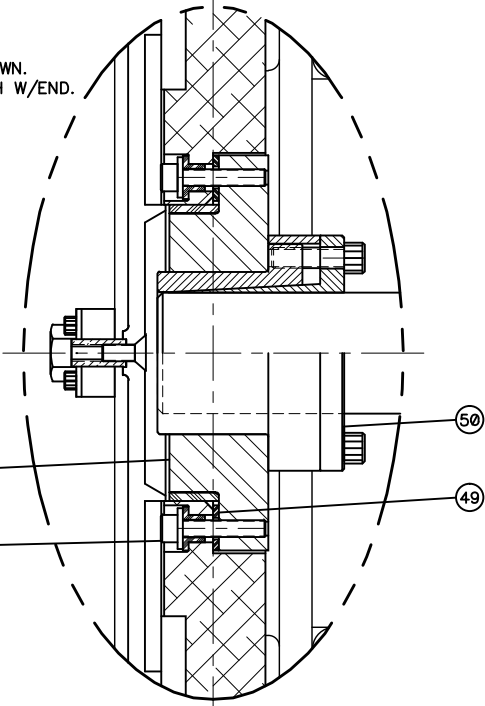


INCLUDED IN ITEM 58  
5MM HEX KEY REQ'D

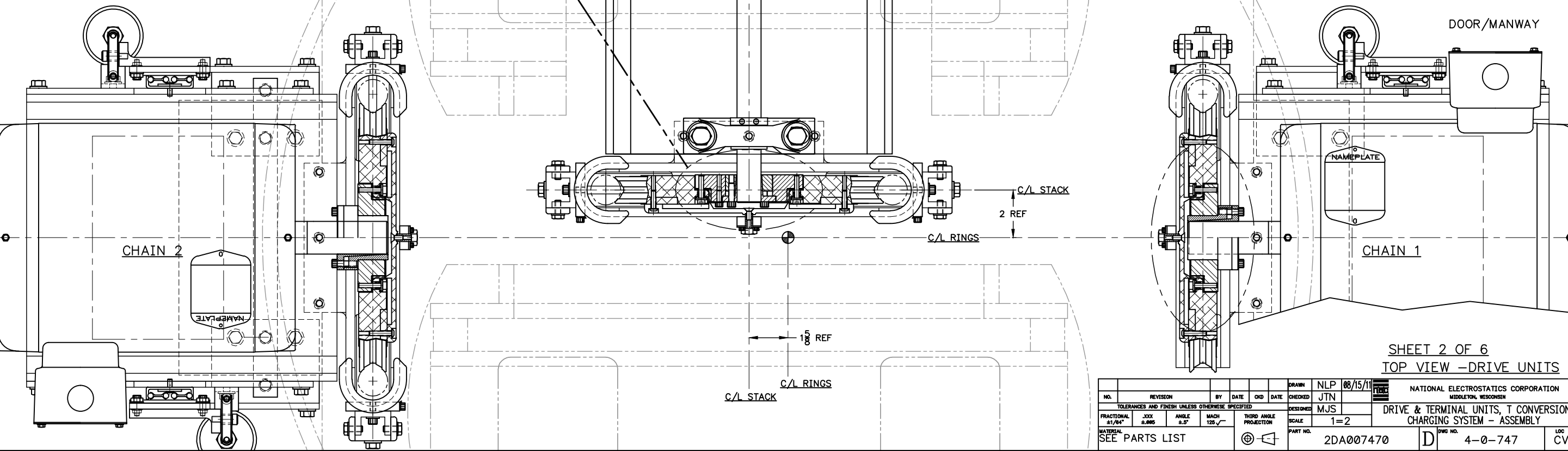
CHAIN 3

**HUB ASSEMBLY/ADJUSTMENT NOTES**

- 1.) SLIDE BUSHING, ITEM 50, INTO INSULATED HUB AS SHOWN.
- 2.) SLIDE BUSHING & HUB ONTO MOTOR SHAFT UNTIL FLUSH W/END.
- 3.) SECURE BUSHING & HUB TOGETHER AXIALLY.
- 4.) TIGHTEN (8) M6 SCREWS EVENLY IN AT LEAST (3) INCREASING TORQUE STEPS, 12 FT-LBS MAXIMUM.

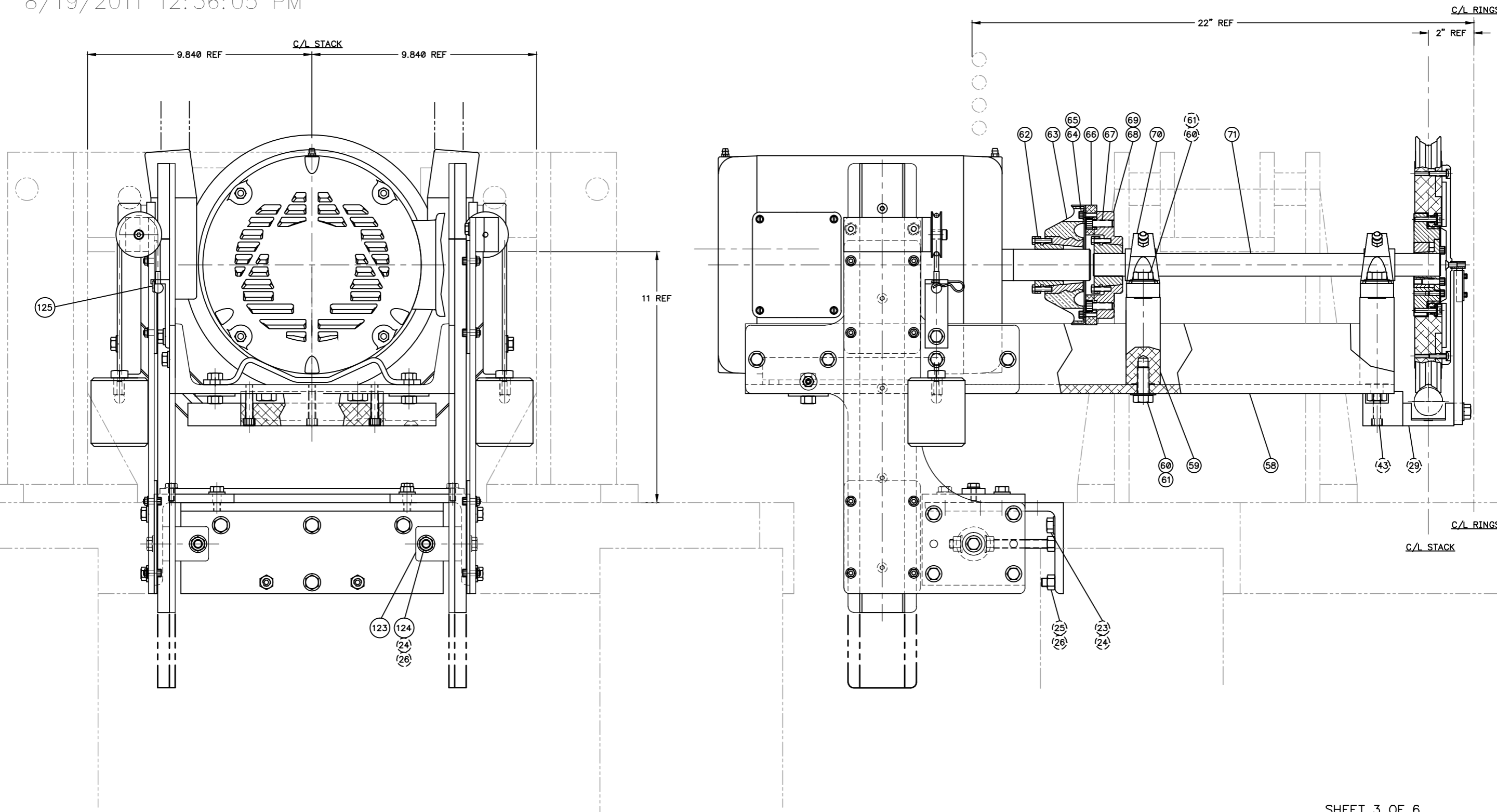


CHAINS 1 & 2



SHEET 2 OF 6  
TOP VIEW - DRIVE UNITS

NO.		REVISION		BY	DATE	CHK	DATE	DRAWN	NLP 08/15/11	NATIONAL ELECTROSTATICS CORPORATION MIDDLETON, WISCONSIN	
CHECKED		JTN		DESIGNED		MJS		SCALE		DRIVE & TERMINAL UNITS, T CONVERSION CHARGING SYSTEM - ASSEMBLY	
FRACTIONAL ±1/64"		XXX ±.005		ANGLE ±.5°		MACH 128		THIRD ANGLE PROJECTION		SCALE 1=2	
MATERIAL SEE PARTS LIST		PART NO.		2DA007470		D		DWG NO. 4-0-747		LOC CV	



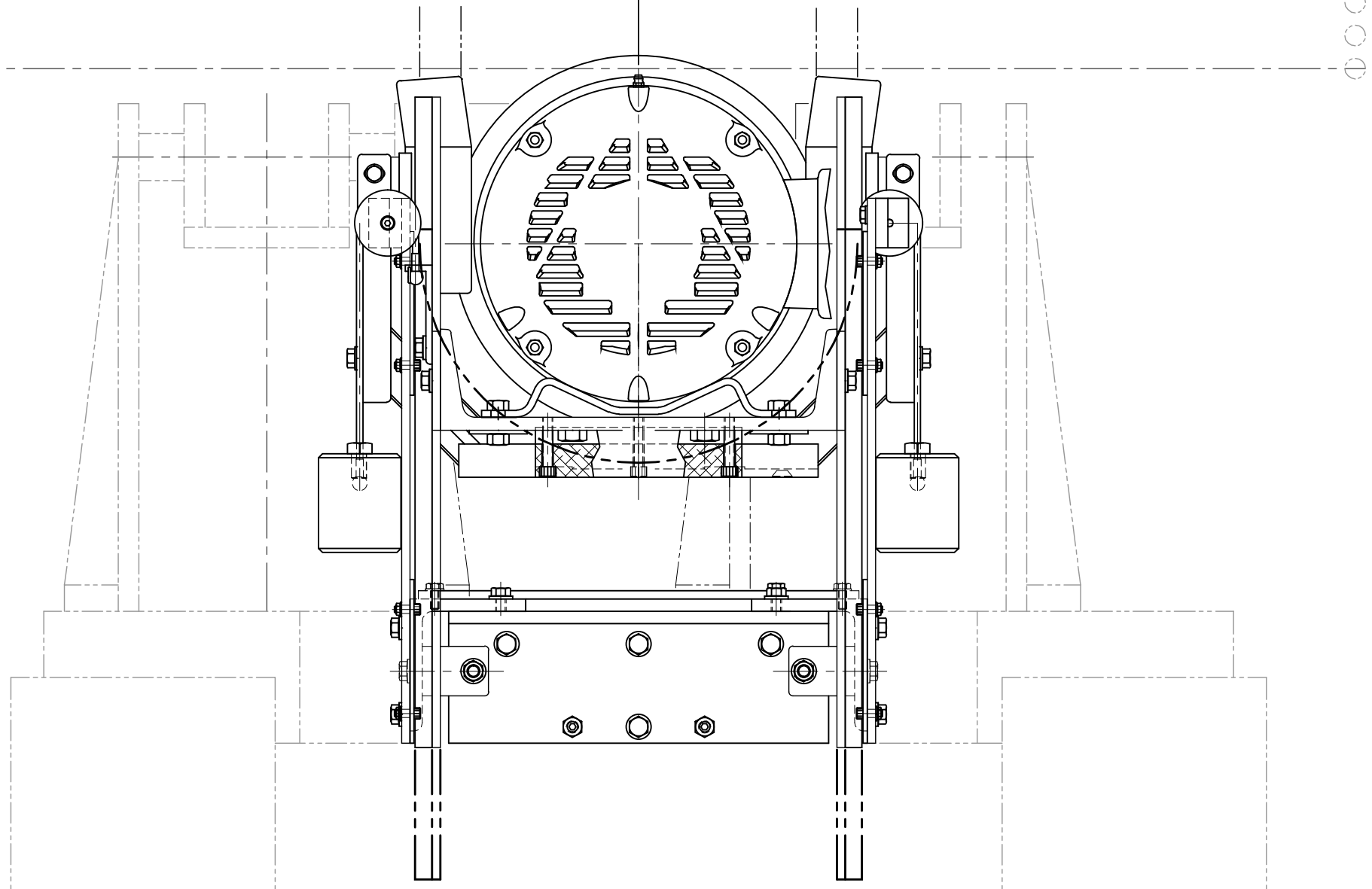
SHEET 3 OF 6  
 END & ELEVATION VIEW - CENTER (CHAIN 3) DRIVE UNIT

NO.		REVISION		BY	DATE	CHK	DATE	DRAWN	NLP	08/15/11	NATIONAL ELECTROSTATICS CORPORATION MIDDLETON, WISCONSIN	
TOLERANCES AND FINISH UNLESS OTHERWISE SPECIFIED								CHECKED	JTN		DRIVE & TERMINAL UNITS, T CONVERSION CHARGING SYSTEM - ASSEMBLY	
FRACTIONAL	XXX	ANGLE	MACH	THIRD ANGLE	SCALE	DESIGNED	MJS	1=2	PART NO.		2DA007470	LOC
±1/64"	±.005	±.5°	125 ✓	PROJECTION								CV
MATERIAL SEE PARTS LIST											4-0-747	

8/19/2011 12:35:00 PM

22 REF

22 REF



END VIEW OF CHAINS 1 & 2 DRIVE UNITS

NO.				REVISION				BY	DATE	CHK	DATE	DRAWN	NLP	08/15/11	NATIONAL ELECTROSTATICS CORPORATION MIDDLETON, WISCONSIN		
TOLERANCES AND FINISH UNLESS OTHERWISE SPECIFIED												DESIGNED	MJS	DRIVE & TERMINAL UNITS, T CONVERSION CHARGING SYSTEM - ASSEMBLY			
FRACTIONAL	.XXX	ANGLE	MACH	THIRD ANGLE	SCALE	PART NO.	D		LOG	CV							
±1/4"	±.005	±.5°	125 ✓	PROJECTION	1=2	2DA007470	4-0-747										
MATERIAL SEE PARTS LIST				SEE PARTS LIST				SEE PARTS LIST				SEE PARTS LIST					

8/19/2011 12:54:08 PM

ORIGINAL STEEL CHANNEL UNMODIFIED -REF

BEAM

VERTICAL MIDPLANE OF BEAM/COLUMN/RINGS

TERMINAL STRIPPER SUPPORT FRAME -REF

ORIGINAL STEEL CHANNEL MODIFIED & BOLTED TO OPPOSITE FACING ADDITIONAL CHANNEL

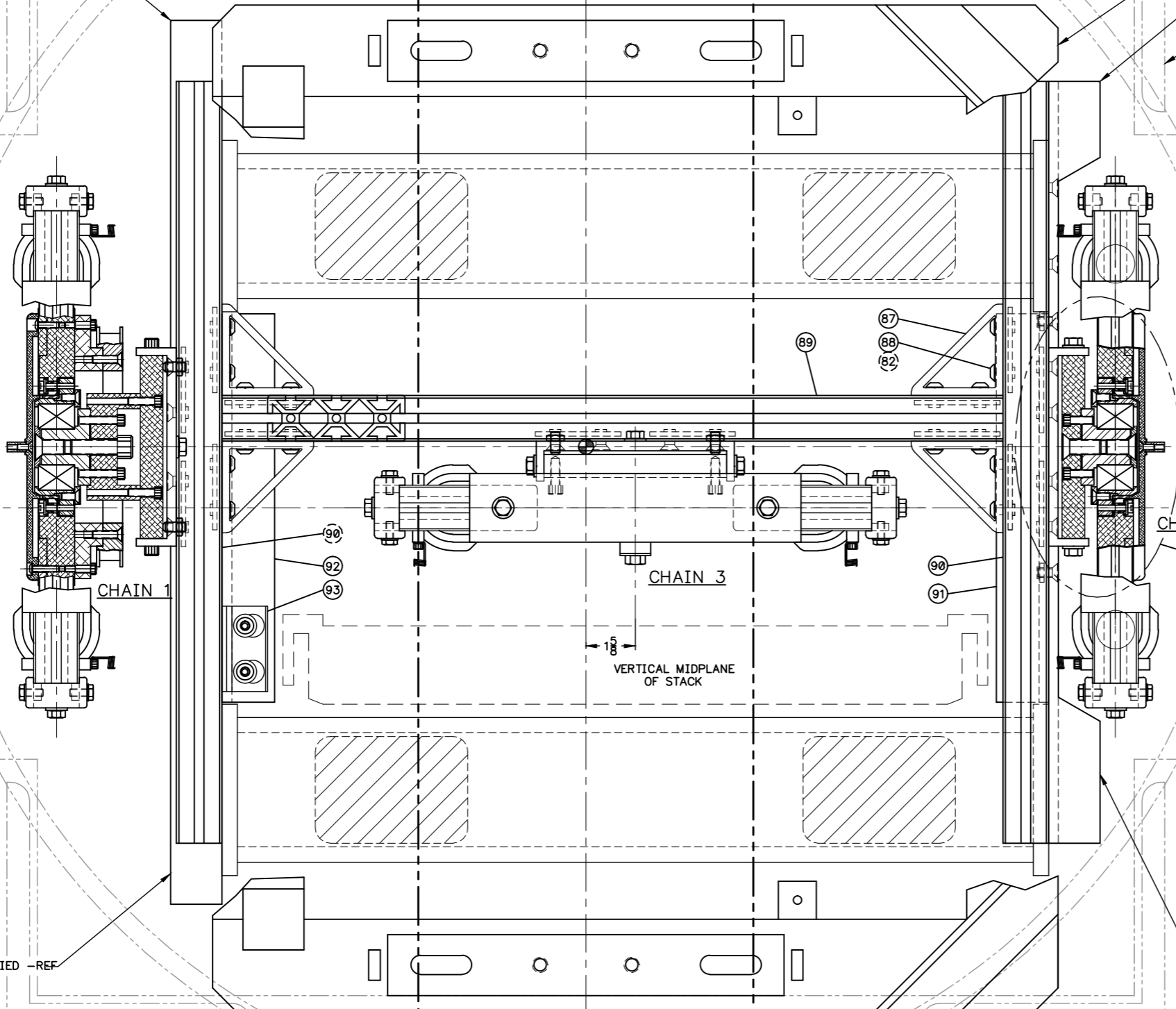
BASE OF COLUMN/STACK -REF

TERMINAL SHELL OD -REF

44" COLUMN RING OD -REF

DOOR/MANWAY

2" REF



VERTICAL MIDPLANE OF COLUMN/RINGS

2" REF

VERTICAL MIDPLANE OF STACK

CHAIN 2

CHAIN 3

VERTICAL MIDPLANE OF STACK

180

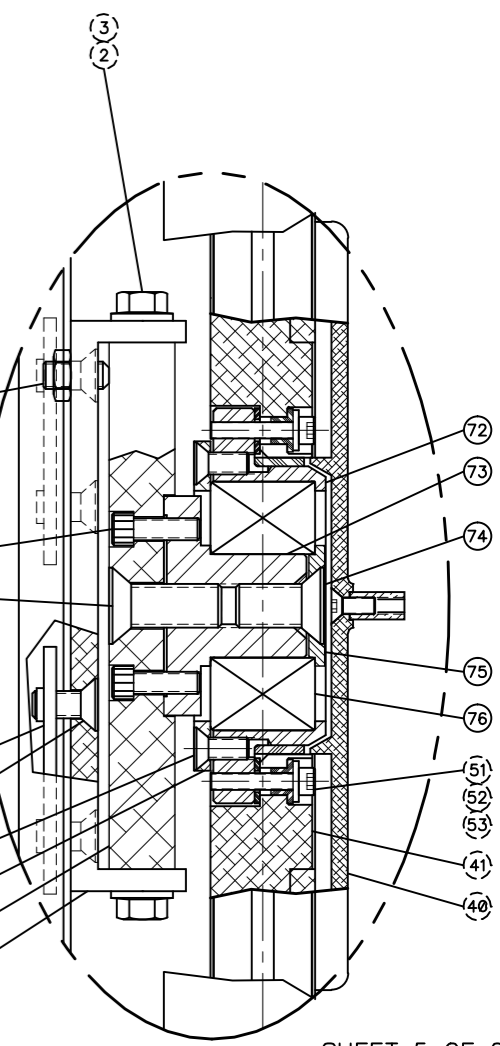
CHAIN 2 & 3 ONLY (84)

CHAIN 2 & 3 ONLY (83)

CHAIN 2 & 3 ONLY (78)

CHAIN 2 & 3 ONLY (77)

ORIGINAL STEEL CHANNEL MODIFIED & BOLTED TO OPPOSITE FACING ADDITIONAL CHANNEL



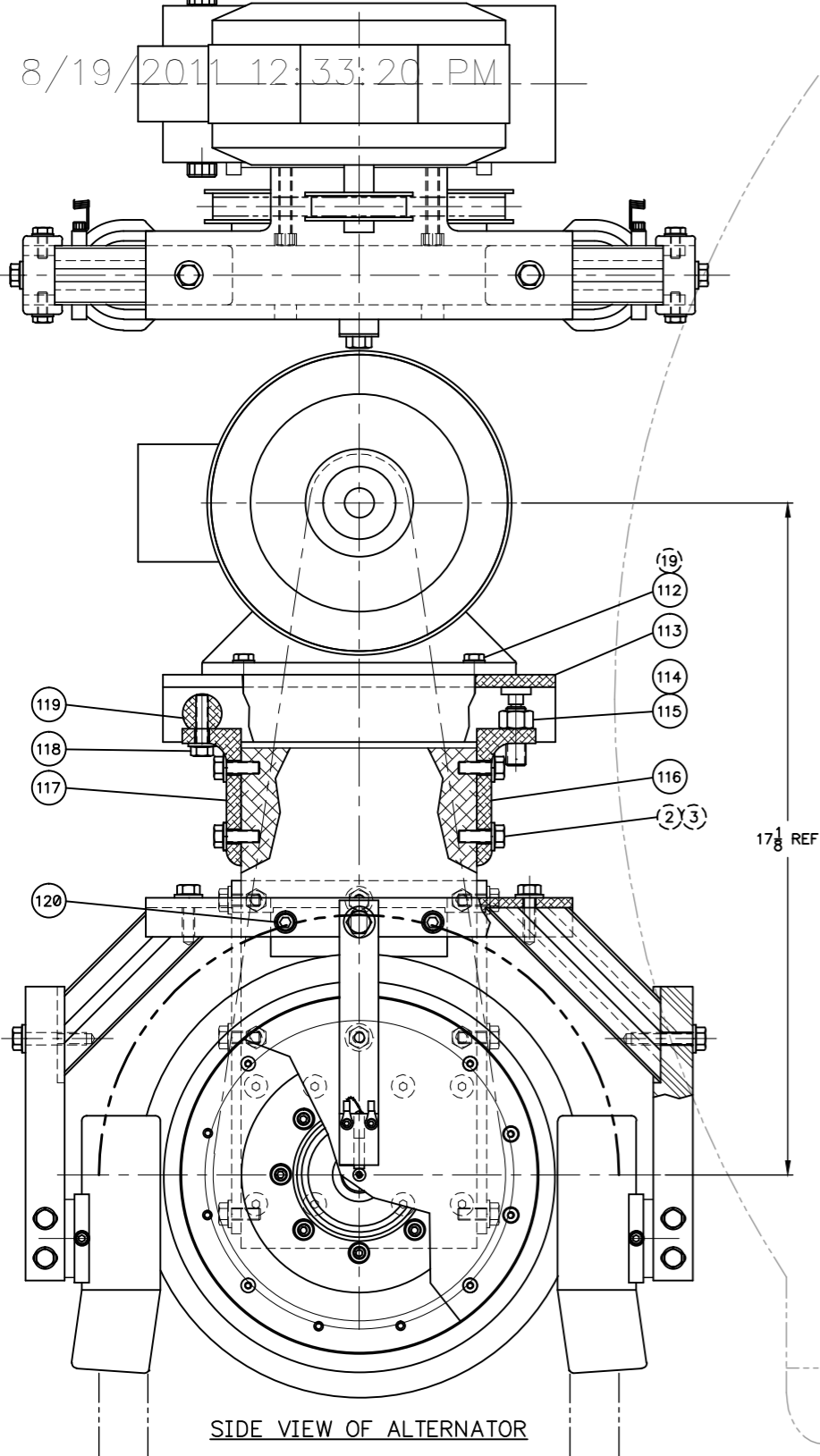
ORIGINAL STEEL CHANNEL UNMODIFIED -REF

SHEET 5 OF 6

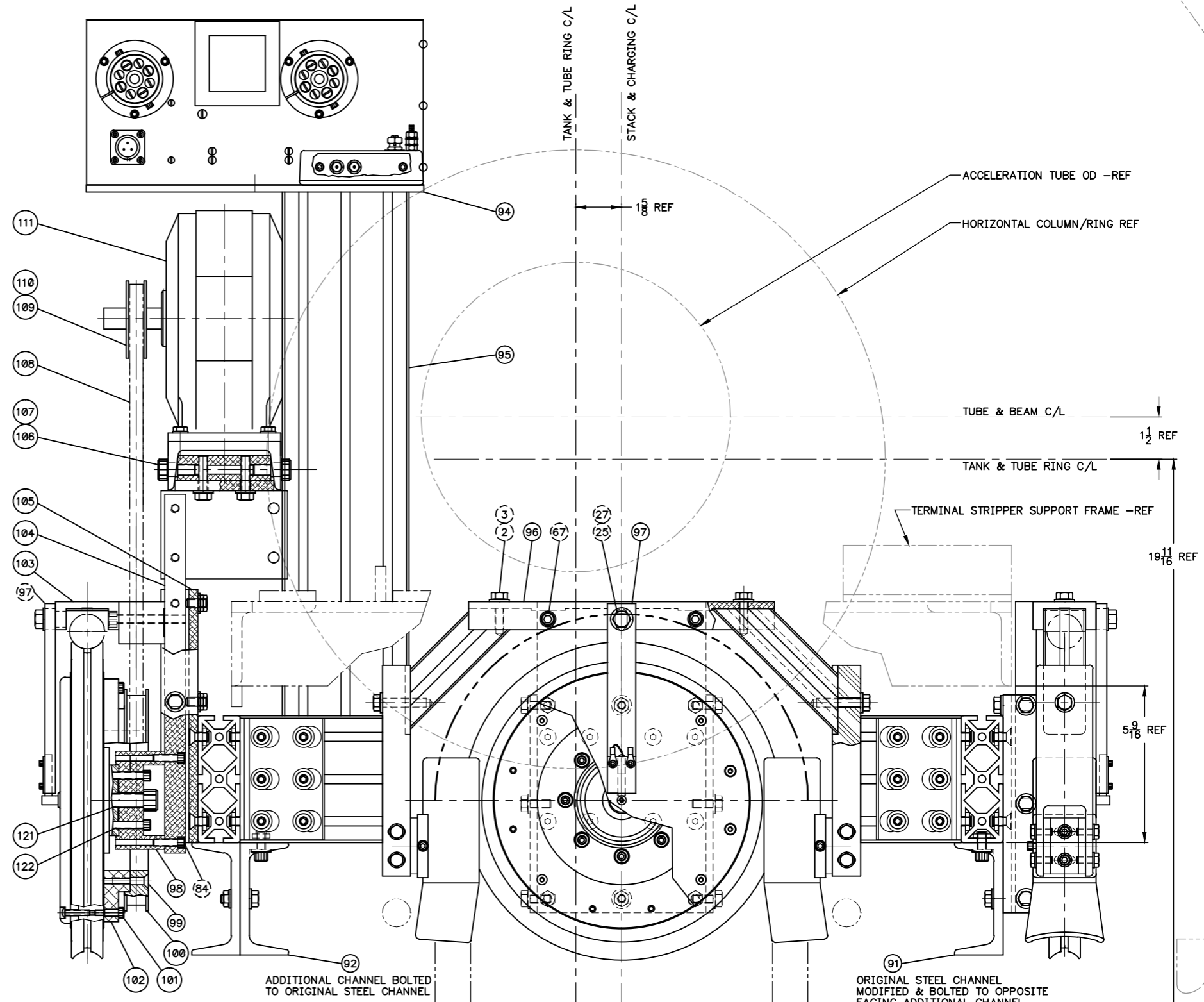
TOP VIEW - TERMINAL UNITS

NO.		REVISION		BY	DATE	CHK	DATE	DRAWN	NLP	08/15/11	NATIONAL ELECTROSTATICS CORPORATION MIDDLETON, WISCONSIN	
TOLERANCES AND FINISH UNLESS OTHERWISE SPECIFIED												
FRACTIONAL	XXX	ANGLE	MACH	THIRD ANGLE	CHECKED	DESIGNED	SCALE	DRIVE & TERMINAL UNITS, T CONVERSION CHARGING SYSTEM - ASSEMBLY				
1/16"	2.0005	2.0"	125	PROJECTION	JTN	MJS	1=2	PART NO. 2DA007470				
MATERIAL SEE PARTS LIST								Dwg No. 4-0-747		LOC CV		

8/19/2011 12:33:20 PM



SIDE VIEW OF ALTERNATOR



SHEET 6 OF 6  
ELEVATION VIEW - TERMINAL UNITS

NO.		REVISION		BY	DATE	CHK	DATE	DRWN	NLP 08/15/11	NATIONAL ELECTROSTATICS CORPORATION MIDDLETON, WISCONSIN	
TOLERANCES AND FINISH UNLESS OTHERWISE SPECIFIED										CHKD	JTN
FRACTIONAL	XXX	ANGLE	MACH	THIRD ANGLE	DESIGNED	SCALE		1=2		DRIVE & TERMINAL UNITS, T CONVERSION CHARGING SYSTEM - ASSEMBLY	
±1/64"	±.005	±.5°	125 ✓	PROJECTION	MJS	PART NO.		2DA007470		DWG NO.	4-0-747
MATERIAL SEE PARTS LIST								LOC		CV	