



Observation of structure in the J/ψ -pair mass spectrum

LHCb collaboration[†]

Abstract

Using proton-proton collision data at centre-of-mass energies of $\sqrt{s} = 7, 8$ and 13 TeV recorded by the LHCb experiment at the Large Hadron Collider, corresponding to an integrated luminosity of 9 fb^{-1} , the invariant mass spectrum of J/ψ pairs is studied. A narrow structure around $6.9 \text{ GeV}/c^2$ matching the lineshape of a resonance and a broad structure just above twice the J/ψ mass are observed. The deviation of the data from nonresonant J/ψ -pair production is above five standard deviations in the mass region between 6.2 and $7.4 \text{ GeV}/c^2$, covering predicted masses of states composed of four charm quarks. The mass and natural width of the narrow $X(6900)$ structure are measured assuming a Breit–Wigner lineshape.

Submitted to Science Bulletin

© 2020 CERN for the benefit of the LHCb collaboration. CC BY 4.0 licence.

[†]Authors are listed at the end of this paper.

1 Introduction

The strong interaction is one of the fundamental forces of nature and it governs the dynamics of quarks and gluons. According to quantum chromodynamics (QCD), the theory describing the strong interaction, quarks are confined into hadrons, in agreement with experimental observations. The quark model [1, 2] classifies hadrons into conventional mesons ($q\bar{q}$) and baryons (qqq or $\bar{q}\bar{q}\bar{q}$), and also allows for the existence of exotic hadrons such as tetraquarks ($qq\bar{q}\bar{q}$) and pentaquarks ($qqq\bar{q}q$). Exotic states provide a unique environment to study the strong interaction and the confinement mechanism [3]. The first experimental evidence for an exotic hadron candidate was the $\chi_{c1}(3872)$ state observed in 2003 by the Belle collaboration [4]. Since then a series of novel states consistent with containing four quarks have been discovered. Recently, the LHCb collaboration observed resonances interpreted to be pentaquark states [5–8]. All hadrons observed to date, including those of exotic nature, contain at most two heavy charm (c) or bottom (b) quarks, whereas many QCD-motivated phenomenological models also predict the existence of states consisting of four heavy quarks, *i.e.* $T_{Q_1Q_2\bar{Q}_3\bar{Q}_4}$, where Q_i is a c or a b quark [9–33]. Theoretically, the interpretation of the internal structure of such states usually assumes the formation of a diquark (Q_1Q_2) and an antidiquark ($\bar{Q}_3\bar{Q}_4$) attracting each other. Application of this diquark model successfully predicts the mass of the doubly charmed baryon Ξ_{cc}^{++} [34, 35] and helps to explain the relative rates of bottom baryon decays [36].

Tetraquark states comprising only bottom quarks, $T_{bb\bar{b}\bar{b}}$, have been searched for by the LHCb and CMS collaborations in the $\Upsilon\mu^+\mu^-$ decay [37, 38], with the Υ state consisting of a $b\bar{b}$ pair. However, the four-charm states, $T_{cc\bar{c}\bar{c}}$, have not yet been studied in detail experimentally. A $T_{cc\bar{c}\bar{c}}$ state could disintegrate into a pair of charmonium states such as J/ψ mesons, with each consisting of a $c\bar{c}$ pair. Decays to a J/ψ meson plus a heavier charmonium state, or two heavier charmonium states, with the heavier states decaying subsequently into a J/ψ meson and accompanying particles, are also possible. Predictions for the masses of $T_{cc\bar{c}\bar{c}}$ states vary from 5.8 to 7.4 GeV/ c^2 [9–24], which are above the masses of known charmonia and charmonium-like exotic states and below those of bottomonium hadrons. This mass range guarantees a clean experimental environment to identify possible $T_{cc\bar{c}\bar{c}}$ states in the J/ψ -pair (also referred to as di- J/ψ) invariant mass ($M_{\text{di-}J/\psi}$) spectrum.

In proton-proton (pp) collisions, a pair of J/ψ mesons can be produced in two separate interactions of gluons or quarks, named double-parton scattering (DPS) [39–41], or in a single interaction, named single-parton scattering (SPS) [42–49]. The SPS process includes both resonant production via intermediate states, which could be $T_{cc\bar{c}\bar{c}}$ tetraquarks, and nonresonant production. Within the DPS process, the two J/ψ mesons are usually assumed to be produced independently, thus the distribution of any di- J/ψ observable can be constructed using the kinematics from single J/ψ production. Evidence of DPS in pp collisions has been found in studies at the Large Hadron Collider (LHC) experiments [50–54]. The LHCb experiment has measured the di- J/ψ production in pp collisions at centre-of-mass energies of $\sqrt{s} = 7$ [55] and 13 TeV [56]. The DPS contribution is found to dominate the high $M_{\text{di-}J/\psi}$ region, in agreement with expectation.

In this paper, fully charmed tetraquark states $T_{cc\bar{c}\bar{c}}$ are searched for in the di- J/ψ

invariant mass spectrum, using pp collision data collected by LHCb at $\sqrt{s} = 7, 8$ and 13 TeV, corresponding to an integrated luminosity of 9 fb^{-1} . The two J/ψ candidates in a pair are reconstructed through the $J/\psi \rightarrow \mu^+ \mu^-$ decay, and are labelled randomly as either J/ψ_1 or J/ψ_2 .

2 Detector and data set

The LHCb detector is designed to study particles containing b or c quarks at the LHC. It is a single-arm forward spectrometer covering the pseudorapidity range $2 < \eta < 5$, described in detail in Refs. [57, 58]. The online event selection is performed by a trigger, which consists of a hardware stage, based on information from the calorimeter and muon systems, followed by a software stage, which applies a full event reconstruction. At the hardware stage, events are required to have at least one muon with high momentum transverse to the beamline, p_T . At the software stage, two oppositely charged muon candidates are required to have high p_T and to form a common vertex. Events are retained if there is at least one J/ψ candidate selected by both the hardware and software trigger stages. Imperfections in the description of the magnetic field and misalignment of subdetectors lead to a bias in the momentum measurement of charged particles, which is calibrated using reconstructed J/ψ and B^+ mesons [59], with well-known masses.

Simulated samples are used to model the signal properties, including the invariant mass resolution and the reconstruction efficiency. In the simulation, pp collisions are generated using PYTHIA [60] with a specific LHCb configuration [61]. Decays of unstable particles are described by EVTGEN [62], in which final-state radiation is generated using PHOTOS [63]. The interaction of the generated particles with the detector and its response are implemented using the GEANT4 toolkit [64], as described in Ref. [65].

3 Candidate selection

In the offline selection, two pairs of oppositely charged muon candidate tracks are reconstructed, with each pair forming a vertex of a J/ψ candidate. Each muon track must have $p_T > 0.65 \text{ GeV}/c$ and momentum $p > 6 \text{ GeV}/c$. The J/ψ candidates are required to have a dimuon invariant mass in the range $3.0 < M_{\mu\mu} < 3.2 \text{ GeV}/c^2$. A kinematic fit is performed for each J/ψ candidate constraining its vertex to coincide with a primary pp collision vertex (PV) [66]. The requirement of a good kinematic fit quality strongly suppresses the contamination of di- J/ψ candidates stemming from feed-down of b -hadrons, which decay at displaced vertices. The four muon tracks in a J/ψ -pair candidate are required to originate from the same PV, reducing to a negligible level the number of pile-up candidates with the two J/ψ candidates produced in separated pp collisions. Fake di- J/ψ candidates, comprising two muon-track candidates reconstructed from the same real particle, are rejected by requiring muons of the same charge to have trajectories separated by an angle inconsistent with zero. For events with more than one reconstructed di- J/ψ candidate, accounting for about 0.8% of the total sample, only one pair is randomly chosen.

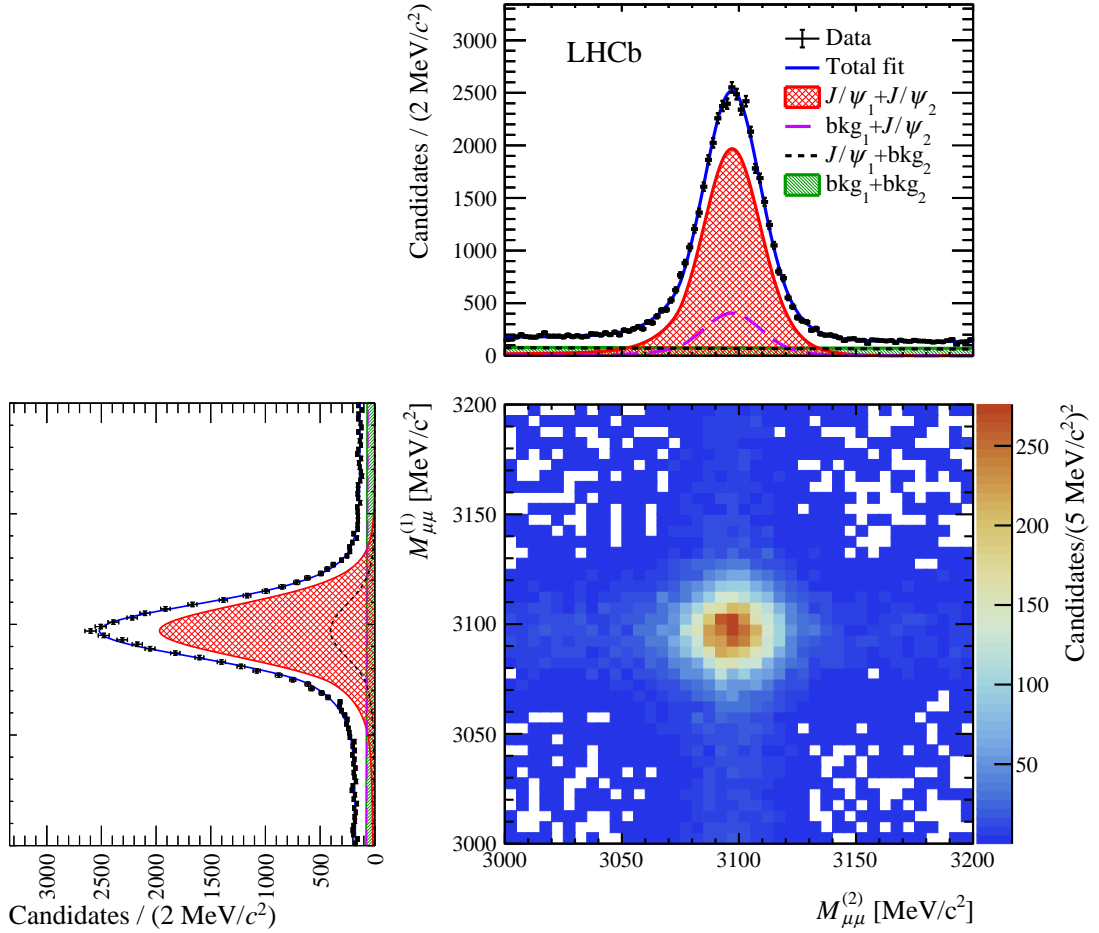


Figure 1: (Bottom right) Two-dimensional $(M_{\mu\mu}^{(1)}, M_{\mu\mu}^{(2)})$ distribution of di- J/ψ candidates and its projections on (bottom left) $M_{\mu\mu}^{(1)}$ and (top) $M_{\mu\mu}^{(2)}$. Four components are present as each projection consists of signal and background J/ψ candidates. The labels $J/\psi_{1,2}$ and $\text{bkg}_{1,2}$ represent the signal and background contributions, respectively, in the $M_{\mu\mu}^{(1),(2)}$ distribution.

The di- J/ψ signal yield is extracted by performing an extended unbinned maximum-likelihood fit to the two-dimensional distribution of J/ψ_1 and J/ψ_2 invariant masses, $(M_{\mu\mu}^{(1)}, M_{\mu\mu}^{(2)})$, as displayed in Fig. 1, where projections of the data and the fit result are shown. For both J/ψ candidates, the signal mass shape is modelled by a Gaussian kernel with power-law tails [67]. Each component of combinatorial background, consisting of random combinations of muon tracks, is described by an exponential function. The total di- J/ψ signal yield is measured to be $(33.57 \pm 0.23) \times 10^3$, where the uncertainty is statistical.

The di- J/ψ transverse momentum ($p_T^{\text{di-}J/\psi}$) in SPS production is expected to be, on average, higher than that in DPS [48]. The high- $p_T^{\text{di-}J/\psi}$ region is thus exploited to

select a data sample with enhanced SPS production, which could include contributions from $T_{cc\bar{c}\bar{c}}$ states. Two different approaches are applied. In the first approach (denoted as $p_T^{\text{di-}J/\psi}$ -threshold), J/ψ -pair candidates are selected with the requirement $p_T^{\text{di-}J/\psi} > 5.2 \text{ GeV}/c$, which maximises the statistical significance of the SPS signal yield. In the second approach (denoted as $p_T^{\text{di-}J/\psi}$ -binned), di- J/ψ candidates are categorised into six $p_T^{\text{di-}J/\psi}$ intervals with boundaries $\{0, 5, 6, 8, 9.5, 12, 50\} \text{ GeV}/c$, defined to obtain equally populated bins of SPS signal events in the $M_{\text{di-}J/\psi}$ range between 6.2 and 7.4 GeV/c^2 . This mass region covers the predicted masses of $T_{cc\bar{c}\bar{c}}$ states decaying into a J/ψ pair. For both scenarios, the DPS yield in the $T_{cc\bar{c}\bar{c}}$ signal region is extrapolated from the high- $M_{\text{di-}J/\psi}$ region using the wide-range distribution constructed from available double-differential J/ψ cross-sections [68–70]. The high- $M_{\text{di-}J/\psi}$ region is chosen such that the SPS yield is negligible compared to DPS. The SPS yield is obtained by subtracting the DPS contribution from the total number of J/ψ -pair signals.

The $M_{\text{di-}J/\psi}$ distribution for candidates with $p_T^{\text{di-}J/\psi} > 5.2 \text{ GeV}/c$ and $3.065 < M_{\mu\mu}^{(1),(2)} < 3.135 \text{ GeV}/c^2$ is shown in Fig. 2. The di- J/ψ mass is calculated by constraining the reconstructed mass of each J/ψ candidate to its known value [71]. The spectrum shows a broad structure just above twice the J/ψ mass threshold ranging from 6.2 to 6.8 GeV/c^2 (dubbed threshold enhancement in the following) and a narrower structure at about 6.9 GeV/c^2 , referred to hereafter as $X(6900)$. There is also a hint of another structure around 7.2 GeV/c^2 , whereas there are no evident structures at higher invariant mass. Several cross-checks are performed to investigate the origin of these structures and to exclude that they are experimental artifacts. The threshold enhancement and the $X(6900)$ structure become more pronounced in higher $p_T^{\text{di-}J/\psi}$ intervals, and they are present in subsamples split according to different beam or detector configurations for data collection. The structures are not caused by the experimental efficiency, since the efficiency variation across the whole $M_{\text{di-}J/\psi}$ range is found to be marginal. Residual background, in which a muon track is reused or at least one J/ψ candidate is produced from a b -hadron decay, is observed to have no structure. The possible contribution of J/ψ pairs from Υ decays is estimated to be negligible and distributed uniformly in the $M_{\text{di-}J/\psi}$ distribution. In Fig. 2, the $M_{\text{di-}J/\psi}$ distribution for background pairs with $M_{\mu\mu}^{(1),(2)}$ in the range $3.00 - 3.05 \text{ GeV}/c^2$ or $3.15 - 3.20 \text{ GeV}/c^2$ is also shown, with the yield normalised by interpolating the background into the J/ψ signal region, which accounts for around 15% of the total candidates. There is no evidence of structures in the $M_{\text{di-}J/\psi}$ distribution of background candidates.

4 Investigation of the J/ψ -pair invariant mass spectrum

To remove background pairs that have at least one background J/ψ candidate, the *sPlot* weighting method [72] is applied, where the weights are calculated from the fit to the two-dimensional $(M_{\mu\mu}^{(1)}, M_{\mu\mu}^{(2)})$ distribution. The background-subtracted di- J/ψ spectra in

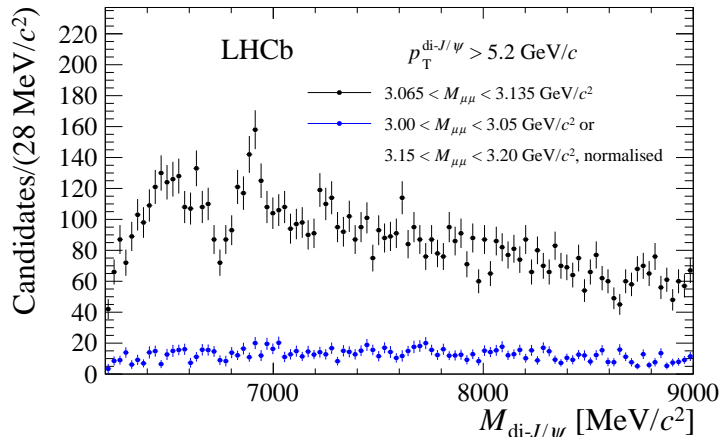


Figure 2: Invariant mass spectrum of J/ψ -pair candidates passing the $p_T^{\text{di-}J/\psi} > 5.2 \text{ GeV}/c$ requirement with reconstructed J/ψ masses in the (black) signal and (blue) background regions, respectively.

the range $6.2 < M_{\text{di-}J/\psi} < 9.0 \text{ GeV}/c^2$ are shown in Fig. 3 for candidates with $p_T^{\text{di-}J/\psi} > 5.2 \text{ GeV}/c$ and Fig. 4 for candidates in the six $p_T^{\text{di-}J/\psi}$ intervals, which are investigated by weighted unbinned maximum-likelihood fits [73]. The $M_{\text{di-}J/\psi}$ distribution of signal events is expected to be dominated by the sum of the nonresonant SPS (NRSPS) and DPS production, which have smooth shapes (referred to as continuum in the following). The DPS continuum is described by an empirical function and its yield determined by extrapolation from the $M_{\text{di-}J/\psi} > 12 \text{ GeV}/c^2$ region, which is dominated and well described by the DPS distribution. The continuum NRSPS is modelled by a two-body phase-space distribution multiplied by an exponential function determined from the data. The combination of continuum NRSPS and DPS does not provide a good description of the data, as is illustrated in Fig. 3(a). The $M_{\text{di-}J/\psi}$ spectrum in the data is tested against the hypothesis that only NRSPS and DPS components are present in the range $6.2 < M_{\text{di-}J/\psi} < 7.4 \text{ GeV}/c^2$ (null hypothesis) using a χ^2 test statistic. Pseudoexperiments are generated and fitted according to the null hypothesis, and the fraction of these fits with a χ^2 value exceeding that in the data is converted into a significance. Considering the sample in the $p_T^{\text{di-}J/\psi} > 5.2 \text{ GeV}/c$ region, the null hypothesis is inconsistent with the data at 3.4 standard deviations (σ). A test performed simultaneously in the aforementioned six $p_T^{\text{di-}J/\psi}$ regions yields a discrepancy of 6.0σ with the null hypothesis. A higher value is obtained in the latter case as more detailed information on the $p_T^{\text{di-}J/\psi}$ distribution is exploited.

The structures in the $M_{\text{di-}J/\psi}$ distribution can have various interpretations. There may be one or more resonant states $T_{c\bar{c}\bar{c}\bar{c}}$ decaying directly into a pair of J/ψ mesons, or $T_{c\bar{c}\bar{c}\bar{c}}$ states decaying into a pair of J/ψ mesons through feed-down of heavier quarkonia, for example $T_{c\bar{c}\bar{c}\bar{c}} \rightarrow \chi_c(\rightarrow J/\psi\gamma)J/\psi$ where the photon escapes detection. In the latter case,

such a state would be expected to peak at a lower $M_{\text{di-}J/\psi}$ position, close to the di- J/ψ mass threshold, and its structure would be broader compared to that from a direct decay. This feed-down is unlikely an explanation for the narrow $X(6900)$ structure. Rescattering of two charmonium states produced by SPS close to their mass threshold may also generate a narrow structure [74–77]. The two thresholds close to the $X(6900)$ structure could be formed by $\chi_{c0}\chi_{c0}$ pairs at $6829.4 \text{ MeV}/c^2$ and $\chi_{c1}\chi_{c0}$ pairs at $6925.4 \text{ MeV}/c^2$, respectively. Whereas a resonance is often described by a relativistic Breit–Wigner (BW) function [71], the lineshape of a structure with rescattering effects taken into account is more complex. In principle, resonant production can interfere with NRSPS of the same spin-parity quantum numbers (J^{PC}), resulting in a coherent sum of the two components and thus a modification of the total $M_{\text{di-}J/\psi}$ distribution.

Two different models of the structure lineshape providing a reasonable description of the data are investigated. The $X(6900)$ lineshape parameters and yields are derived from fits to the $p_{\text{T}}^{\text{di-}J/\psi}$ -threshold sample. Simultaneous $p_{\text{T}}^{\text{di-}J/\psi}$ -binned fits are also performed as a cross-check and the variation of lineshape parameters is considered as a source of systematic uncertainties. Due to its low significance, the structure around $7.2 \text{ GeV}/c^2$ has been neglected.

In model I, the $X(6900)$ structure is considered as a resonance, whereas the threshold enhancement is described through a superposition of two resonances. The lineshapes of these resonances are described by S -wave relativistic BW functions multiplied by a two-body phase-space distribution. The experimental resolution on $M_{\text{di-}J/\psi}$ is below $5 \text{ MeV}/c^2$ over the full mass range and negligible compared to the widths of the structures. The projections of the $p_{\text{T}}^{\text{di-}J/\psi}$ -threshold fit using this model are shown in Fig. 3(b). The mass, natural width and yield are determined to be $m[X(6900)] = 6905 \pm 11 \text{ MeV}/c^2$, $\Gamma[X(6900)] = 80 \pm 19 \text{ MeV}$ and $N_{\text{sig}} = 252 \pm 63$, where biases on the statistical uncertainties have been corrected using a bootstrap method [78]. The goodness of fit is studied using a χ^2 test statistic and found to be $\chi^2/\text{ndof} = 112.7/89$, corresponding to a probability of 4.6%. The fit is also performed assuming the threshold enhancement as due to a single wide resonance (see Supplementary Material); the fit quality is found significantly poorer and thus this model is not further investigated.

A comparison between the best fit result of model I and the data reveals a tension around $6.75 \text{ GeV}/c^2$, where the data shows a dip. In an attempt to describe the dip, model II allows for interference between the NRSPS component and a resonance for the threshold enhancement. The coherent sum of the two components is defined as

$$\left| Ae^{i\phi} \sqrt{f_{\text{nr}}(M_{\text{di-}J/\psi})} + \text{BW}(M_{\text{di-}J/\psi}) \right|^2, \quad (1)$$

where A and ϕ are the magnitude and phase of the nonresonant component, relative to the BW lineshape for the resonance, assumed to be independent of $M_{\text{di-}J/\psi}$, and $f_{\text{nr}}(M_{\text{di-}J/\psi})$ is an exponential function. The interference term in Eq. (1) is then added incoherently to the BW function describing the $X(6900)$ structure and the DPS description. The fit to the $p_{\text{T}}^{\text{di-}J/\psi}$ -threshold sample with this model has a probability of 15.5% ($\chi^2/\text{ndf} = 104.7/91$), and its projections are illustrated in Fig. 3(c). In this case, the mass, natural width and

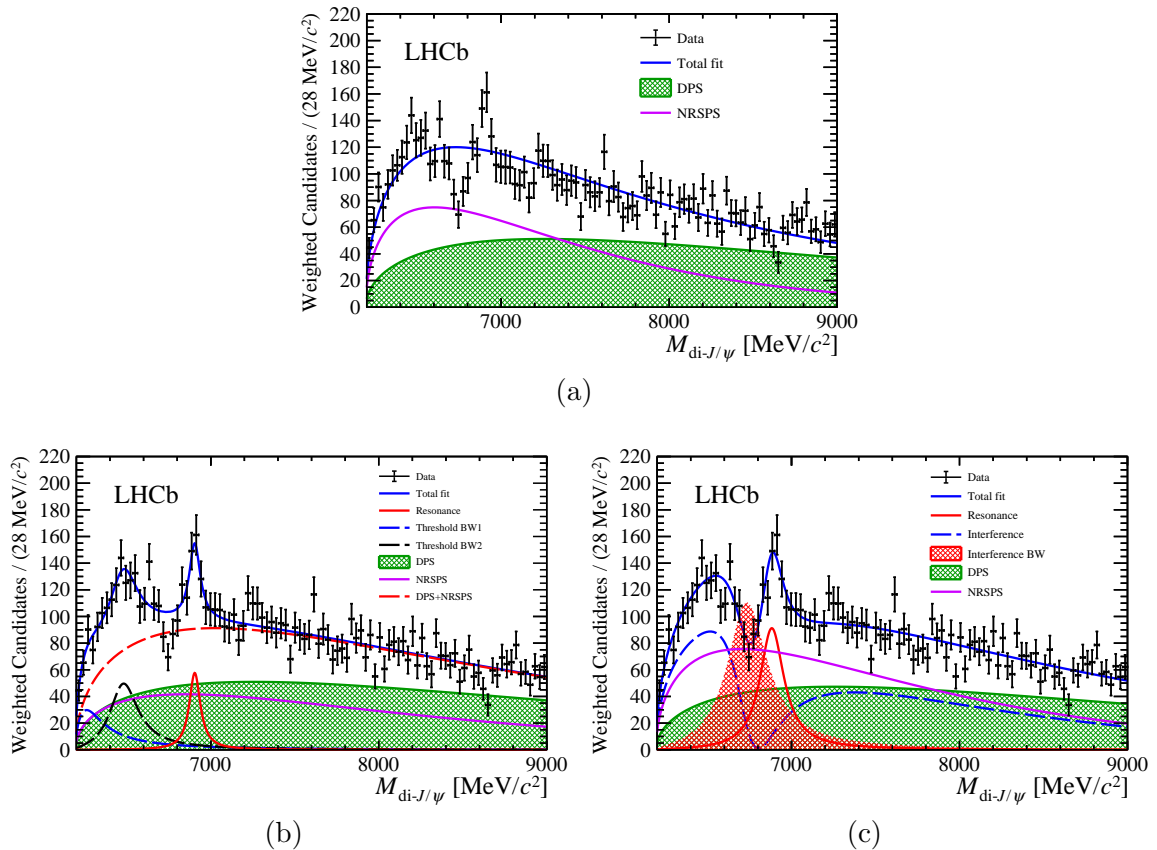


Figure 3: Invariant mass spectra of weighted di- J/ψ candidates with $p_T^{\text{di-}J/\psi} > 5.2 \text{ GeV}/c$ and overlaid projections of the $p_T^{\text{di-}J/\psi}$ -threshold fit using (a) the NRSPS plus DPS model, (b) model I, and (c) model II.

yield are determined to be $m[X(6900)] = 6886 \pm 11 \text{ MeV}/c^2$, $\Gamma[X(6900)] = 168 \pm 33 \text{ MeV}$ and $N_{\text{sig}} = 784 \pm 148$. A larger $X(6900)$ width and yield are preferred in comparison to model I. Here it is assumed that the whole NRSPS production is involved in the interference with the lower-mass resonance despite that there may be several components with different quantum numbers in the NRSPS and more than one resonance in the threshold enhancement.

Fits to the $M_{\text{di-}J/\psi}$ distributions in the six individual $p_T^{\text{di-}J/\psi}$ bins are shown in Fig. 4 for model I, while those for model II are given in the Supplementary Material. An additional model describing the dip and the $X(6900)$ structure simultaneously by using the interference between the NRSPS and a BW resonance around $6.9 \text{ GeV}/c^2$ is also considered, however the fit quality is significantly poorer, as illustrated in the Supplementary Material. Alternative lineshapes, other than the BW, may also be possible to describe these structures and will be the subject of future studies.

The increase of the likelihood between the fits with or without considering the $X(6900)$

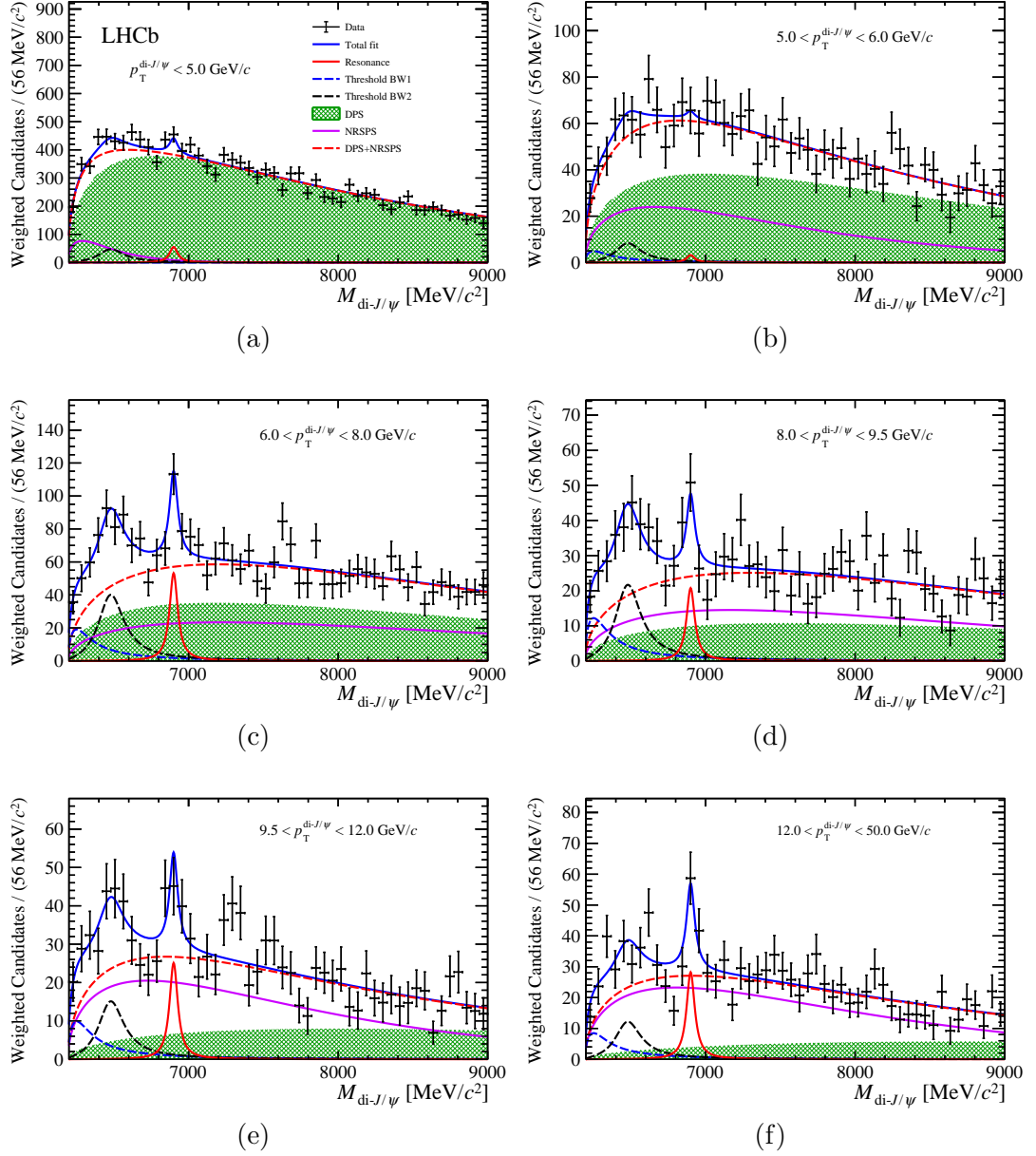


Figure 4: Invariant mass spectra of weighted $di\text{-}J/\psi$ candidates in bins of $p_{\text{T}}^{\text{di-}J/\psi}$ and overlaid projections of the $p_{\text{T}}^{\text{di-}J/\psi}$ -binned fit with model I.

and the threshold enhancement structures on top of the continuum NRSPS plus DPS model is used to calculate the combined global significance of the two structures [79] in the $6.2 < M_{\text{di-}J/\psi} < 7.4 \text{ GeV}/c^2$ region. Only model I is studied, where the interference between the NRSPS and the threshold enhancement is not included. Similarly, the significance for each individual structure is evaluated assuming the presence of the other along with the

Table 1: Significance evaluated under the various assumptions described in the text.

Structure	Significance	
	$p_T^{\text{di-}J/\psi}$ -threshold	$p_T^{\text{di-}J/\psi}$ -binned
Any structure beyond NRSPS plus DPS	3.4σ	6.0σ
Threshold enhancement plus $X(6900)$	6.4σ	6.9σ
Threshold enhancement	6.0σ	6.5σ
$X(6900)$	5.1σ	5.4σ

Table 2: Systematic uncertainties on the mass (m) and natural width (Γ) of the $X(6900)$ structure.

Component	Without interference		With interference	
	m [MeV/ c^2]	Γ [MeV]	m [MeV/ c^2]	Γ [MeV]
<i>sPlot</i> weights	0.8	10.3	4.4	36.9
Experimental resolution	0.0	1.4	0.0	0.6
NRSPS+DPS modelling	0.8	16.1	3.5	9.3
$X(6900)$ shape	0.0	0.3	0.4	0.2
Cut on $p_T^{\text{di-}J/\psi}$	4.6	13.5	6.2	56.7
b -hadron feed-down	0.0	0.2	0.0	5.3
Structure at $7.2 \text{ GeV}/c^2$	1.3	9.2	6.7	5.2
Threshold structure shape	5.2	20.5	–	–
NRSPS phase	–	–	0.3	1.3
Total	7	33	11	69

NRSPS and DPS continuum. The significance is determined from both $p_T^{\text{di-}J/\psi}$ -threshold and $p_T^{\text{di-}J/\psi}$ -binned fits, and summarised in Table 1. The results are above 5σ for the two structures, with slightly higher significance for the $p_T^{\text{di-}J/\psi}$ -binned case.

Systematic uncertainties on the measurements of the mass and natural width of the $X(6900)$ structure are reported in Table 2. They include variations of the results obtained by: including an explicit component in the $M_{\text{di-}J/\psi}$ fits for the J/ψ combinatorial background rather than subtracting it using the weighting method (*sPlot* weights in Table 2); convolving the $M_{\text{di-}J/\psi}$ fit functions with a Gaussian function of $5 \text{ MeV}/c^2$ width to account for the invariant mass resolution (Experimental resolution); modelling the threshold structure using an alternative Gaussian function with asymmetric power-law tails, or fitting in a reduced $M_{\text{di-}J/\psi}$ range excluding the threshold structure (Threshold structure shape); using alternative functions to describe the NRSPS component and varying the DPS yield (NRSPS

plus DPS modelling); allowing the relative phase in the NRSPS component to vary linearly with $M_{\text{di-}J/\psi}$ (NRSPS phase) using an alternative P -wave BW function for the $X(6900)$ structure and varying the hadron radius in the BW function from 2 to 5 GeV^{-1} [$X(6900)$ shape]; obtaining results from a simultaneous fit to the $M_{\text{di-}J/\psi}$ distributions in the six $p_{\text{T}}^{\text{di-}J/\psi}$ bins (Cut on $p_{\text{T}}^{\text{di-}J/\psi}$); including an explicit contribution for J/ψ mesons from b -hadron feed-down (b -hadron feed-down) or adding a BW component for the $7.2 \text{ GeV}/c^2$ structure (Structure at $7.2 \text{ GeV}/c^2$). The total uncertainties are determined to be $7 \text{ MeV}/c^2$ and 33 MeV for the mass and natural width, respectively, without considering any interference, and $11 \text{ MeV}/c^2$ and 69 MeV when the interference between NRSPS and the threshold structure is introduced.

For the scenario without interference, the production cross-section of the $X(6900)$ structure relative to that of all J/ψ pairs (inclusive), times the branching fraction $\mathcal{B}(X(6900) \rightarrow J/\psi J/\psi)$, \mathcal{R} , is determined in the pp collision data at $\sqrt{s} = 13 \text{ TeV}$. The measurement is obtained for both J/ψ mesons in the fiducial region of transverse momentum below $10 \text{ GeV}/c$ and rapidity between 2.0 and 4.5. An event-by-event efficiency correction is performed to obtain the signal yield at production. The residual contamination from b -hadron feed-down is subtracted from inclusive J/ψ -pair production following Ref. [70]. The systematic uncertainties on the $X(6900)$ yield are estimated in a similar way to that for the mass and natural width, while other systematic uncertainties mostly cancel in the ratio. The production ratio is measured to be $\mathcal{R} = [1.1 \pm 0.4 (\text{stat}) \pm 0.3 (\text{syst})]\%$ without any $p_{\text{T}}^{\text{di-}J/\psi}$ requirement and $\mathcal{R} = [2.6 \pm 0.6 (\text{stat}) \pm 0.8 (\text{syst})]\%$ for $p_{\text{T}}^{\text{di-}J/\psi} > 5.2 \text{ GeV}/c$.

5 Summary

In conclusion, using pp collision data at centre-of-mass energies of 7, 8 and 13 TeV collected with the LHCb detector, corresponding to an integrated luminosity of 9 fb^{-1} , the J/ψ -pair invariant mass spectrum is studied. The data in the mass range between 6.2 and $7.4 \text{ GeV}/c^2$ are found to be inconsistent with the hypothesis of NRSPS plus DPS continuum. A narrow structure, $X(6900)$, matching the lineshape of a resonance and a broad structure next to the di- J/ψ mass threshold are found. The global significance of either the broad or the $X(6900)$ structure is determined to be larger than five standard deviations. Describing the $X(6900)$ structure with a Breit–Wigner lineshape, its mass and natural width are determined to be

$$m[X(6900)] = 6905 \pm 11 \pm 7 \text{ MeV}/c^2$$

and

$$\Gamma[X(6900)] = 80 \pm 19 \pm 33 \text{ MeV},$$

assuming no interference with the NRSPS continuum is present, where the first uncertainty is statistical and the second systematic. When assuming the NRSPS continuum interferes with the broad structure close to the di- J/ψ mass threshold, they become

$$m[X(6900)] = 6886 \pm 11 \pm 11 \text{ MeV}/c^2$$

and

$$\Gamma[X(6900)] = 168 \pm 33 \pm 69 \text{ MeV}.$$

The $X(6900)$ structure could originate from a hadron state consisting of four charm quarks, $T_{cc\bar{c}\bar{c}}$, predicted in various tetraquark models. The broad structure close to the di- J/ψ mass threshold could be due to a mixture of multiple four-charm states or have contributions from feed-down of four-charm states through heavier quarkonia. Other interpretations cannot presently be ruled out, for example the rescattering of two charmonium states produced close to their mass threshold. More data along with additional measurements, including determination of the spin-parity quantum numbers and p_T dependence of the production cross-section, are needed to provide further information about the nature of the observed structure.

Acknowledgements

We express our gratitude to our colleagues in the CERN accelerator departments for the excellent performance of the LHC. We thank the technical and administrative staff at the LHCb institutes. We acknowledge support from CERN and from the national agencies: CAPES, CNPq, FAPERJ and FINEP (Brazil); MOST and NSFC (China); CNRS/IN2P3 (France); BMBF, DFG and MPG (Germany); INFN (Italy); NWO (Netherlands); MNiSW and NCN (Poland); MEN/IFA (Romania); MSHE (Russia); MinECo (Spain); SNSF and SER (Switzerland); NASU (Ukraine); STFC (United Kingdom); DOE NP and NSF (USA). We acknowledge the computing resources that are provided by CERN, IN2P3 (France), KIT and DESY (Germany), INFN (Italy), SURF (Netherlands), PIC (Spain), GridPP (United Kingdom), RRCKI and Yandex LLC (Russia), CSCS (Switzerland), IFIN-HH (Romania), CBPF (Brazil), PL-GRID (Poland) and OSC (USA). We are indebted to the communities behind the multiple open-source software packages on which we depend. Individual groups or members have received support from AvH Foundation (Germany); EPLANET, Marie Skłodowska-Curie Actions and ERC (European Union); A*MIDEX, ANR, Labex P2IO and OCEVU, and Région Auvergne-Rhône-Alpes (France); Key Research Program of Frontier Sciences of CAS, CAS PIFI, and the Thousand Talents Program (China); RFBR, RSF and Yandex LLC (Russia); GVA, XuntaGal and GENCAT (Spain); the Royal Society and the Leverhulme Trust (United Kingdom).

Supplementary Material

In the Supplementary Material, the J/ψ -pair mass distributions in bins of $p_T^{\text{di-}J/\psi}$ are shown in Sec. A, the fits using several additional models to the J/ψ -pair mass spectrum are presented in Sec. B, and some supplemental information to the fit result of model II is given in Sec. C.

A J/ψ -pair mass distributions in bins of $p_T^{\text{di-}J/\psi}$

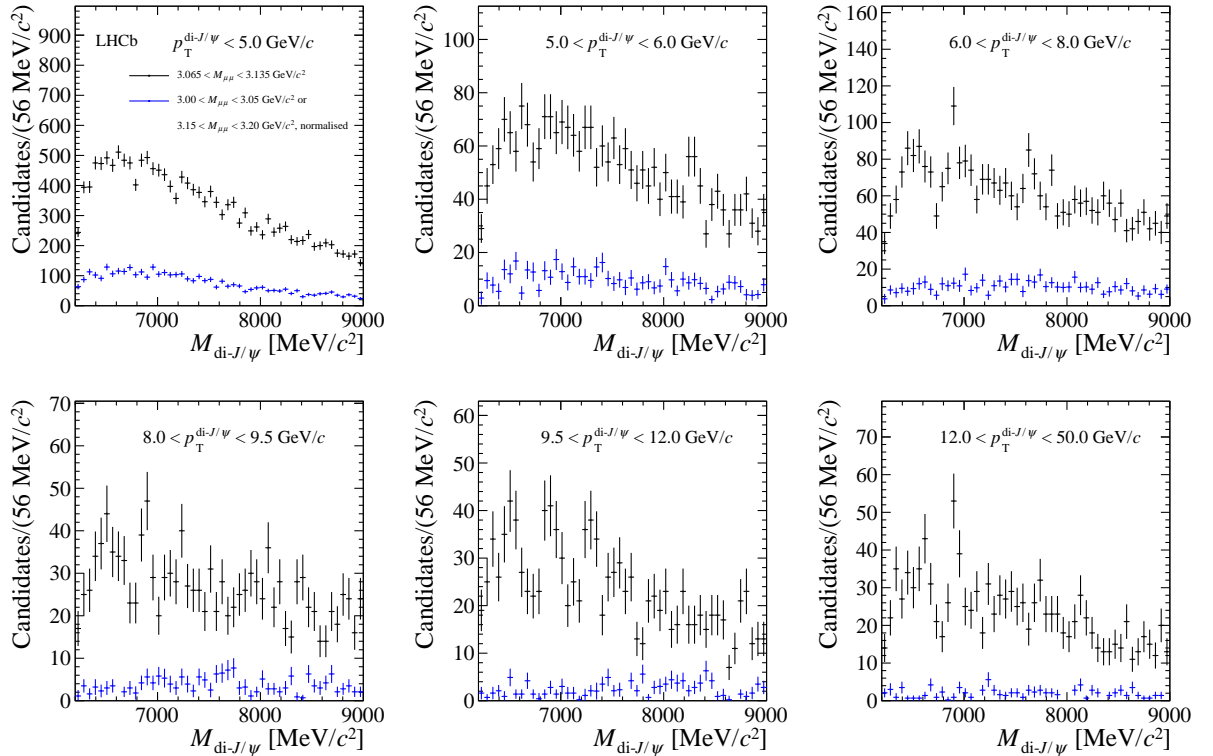


Figure 5: Invariant mass spectra of J/ψ -pair candidates in the six $p_T^{\text{di-}J/\psi}$ regions with boundaries $\{0, 5, 6, 8, 9.5, 12, 50\}$ GeV/c with reconstructed J/ψ masses in the (black) signal and (blue) background regions, respectively.

B Additional fits to the J/ψ -pair mass spectrum

Figure 6 shows the fits to the J/ψ -pair mass spectrum with (a) the threshold structure described by a single Breit–Wigner (BW) lineshape and (b) using a model that contains

a single BW resonance interfering with the SPS continuum. The χ^2/ndof of the two fits are 125.6/92 and 118.6/91, corresponding to a probability of 1.2% and 2.8%, respectively. Figure 7 shows the fit with an additional BW function introduced to describe the $7.2 \text{ GeV}/c^2$ structure, based on the model that contains two BW lineshapes for the threshold structure and a BW shape for the $X(6900)$ structure on top of the NRSPS plus DPS continuum.

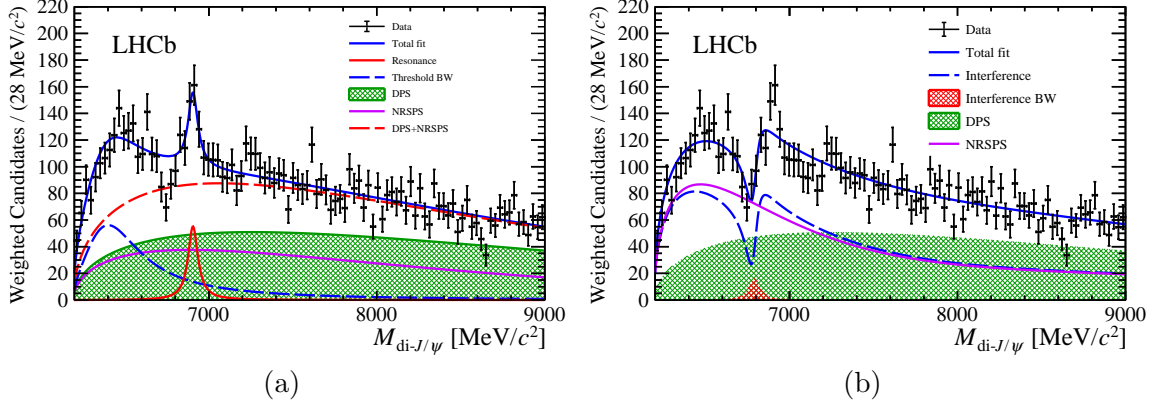


Figure 6: Invariant mass spectra of weighted $\text{di-}J/\psi$ candidates with $p_T^{\text{di-}J/\psi} > 5.2 \text{ GeV}/c$ and overlaid projections of the $p_T^{\text{di-}J/\psi}$ -threshold fit with (a) the threshold structure described as a single BW function, and (b) assuming a single BW interfering with the SPS continuum.

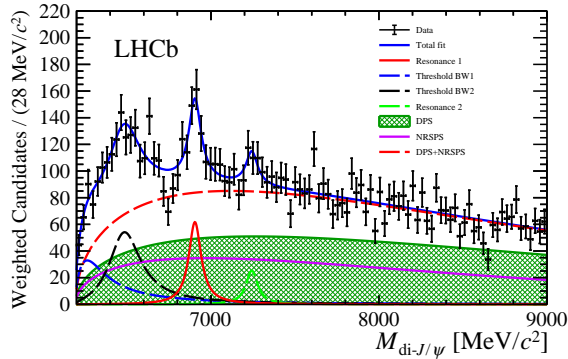


Figure 7: Invariant mass spectra of weighted $\text{di-}J/\psi$ candidates with $p_T^{\text{di-}J/\psi} > 5.2 \text{ GeV}/c$ and overlaid projections of the $p_T^{\text{di-}J/\psi}$ -threshold fit with an additional BW function introduced to describe the $7.2 \text{ GeV}/c^2$ structure, based on the model that contains two BW lineshapes for the threshold structure and a BW shape for the $X(6900)$ structure on top of the NRSPS plus DPS continuum.

C Supplement to fit result of model II

In model II that contains a BW lineshape for the threshold structure interfering with the NRSPS, a BW shape for the $X(6900)$ structure and the DPS continuum, the parameters of the lower-mass BW lineshape is determined to $M = 6741 \pm 6$ (stat) MeV/ c^2 and $\Gamma = 288 \pm 16$ (stat) MeV. The systematic uncertainties on the mass and natural width are not studied. Due to the complex nature of the threshold structure, and the simple interference scenario considered, this study is not considered to claim a state with the parameters reported here.

Projections of the fit to the J/ψ -pair invariant mass spectra in bins of $p_T^{\text{di-}J/\psi}$ assuming the interference between the threshold structure and the SPS continuum are shown in Fig. 8.

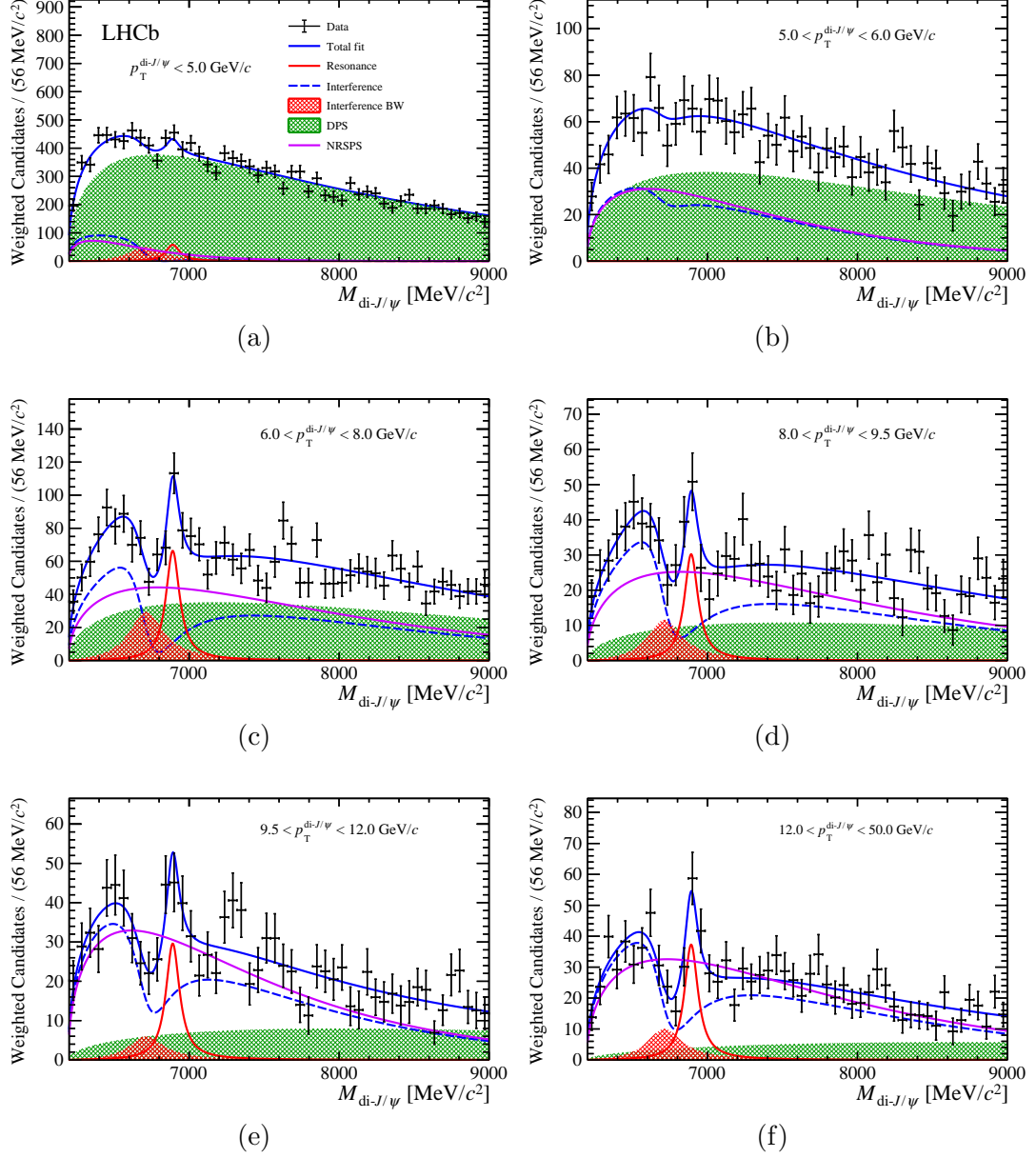


Figure 8: Invariant mass spectra of weighted di-/ J/ψ candidates in bins of $p_T^{\text{di-}J/\psi}$ and overlaid projections of the $p_T^{\text{di-}J/\psi}$ -binned fit assuming that the threshold structure interferes with the SPS continuum.

References

- [1] M. Gell-Mann, *A schematic model of baryons and mesons*, Phys. Lett. **8** (1964) 214.
- [2] G. Zweig, *An SU_3 model for strong interaction symmetry and its breaking; Version 1* CERN-TH-401, CERN, Geneva, 1964.
- [3] N. Brambilla *et al.*, *QCD and Strongly Coupled Gauge Theories: Challenges and Perspectives*, Eur. Phys. J. C **74** (2014) 2981, [arXiv:1404.3723](#).
- [4] Belle collaboration, S. K. Choi *et al.*, *Observation of a narrow charmonium-like state in exclusive $B^\pm \rightarrow K^\pm \pi^+ \pi^- J/\psi$ decays*, Phys. Rev. Lett. **91** (2003) 262001, [arXiv:hep-ex/0309032](#).
- [5] LHCb collaboration, R. Aaij *et al.*, *Observation of J/ψ resonances consistent with pentaquark states in $\Lambda_b^0 \rightarrow J/\psi p K^-$ decays*, Phys. Rev. Lett. **115** (2015) 072001, [arXiv:1507.03414](#).
- [6] LHCb collaboration, R. Aaij *et al.*, *Model-independent evidence for J/ψ contributions to $\Lambda_b^0 \rightarrow J/\psi p K^-$ decays*, Phys. Rev. Lett. **117** (2016) 082002, [arXiv:1604.05708](#).
- [7] LHCb collaboration, R. Aaij *et al.*, *Evidence for exotic hadron contributions to $\Lambda_b^0 \rightarrow J/\psi p \pi^-$ decays*, Phys. Rev. Lett. **117** (2016) 082003, [arXiv:1606.06999](#).
- [8] LHCb collaboration, R. Aaij *et al.*, *Observation of a narrow $P_c(4312)^+$ state, and of two-peak structure of the $P_c(4450)^+$* , Phys. Rev. Lett. **122** (2019) 222001, [arXiv:1904.03947](#).
- [9] Y. Iwasaki, *Is a state $c\bar{c}c\bar{c}$ found at 6.0 GeV?*, Phys. Rev. Lett. **36** (1976) 1266.
- [10] K.-T. Chao, *The $(cc) - (\bar{c}\bar{c})$ (diquark-antidiquark) states in e^+e^- annihilation*, Z. Phys. C **7** (1981) 317.
- [11] J.-P. Ader, J.-M. Richard, and P. Taxil, *Do narrow heavy multiquark states exist?*, Phys. Rev. D **25** (1982) 2370.
- [12] A. M. Badalian, B. L. Ioffe, and A. V. Smilga, *Four quark states in heavy quark systems*, Nucl. Phys. B **281** (1987) 85.
- [13] A. V. Berezhnoy, A. V. Luchinsky, and A. A. Novoselov, *Heavy tetraquarks production at the LHC*, Phys. Rev. D **86** (2012) 034004, [arXiv:1111.1867](#).
- [14] J. Wu *et al.*, *Heavy-flavored tetraquark states with the $QQ\bar{Q}\bar{Q}$ configuration*, Phys. Rev. **D97** (2018) 094015, [arXiv:1605.01134](#).
- [15] M. Karliner, S. Nussinov, and J. L. Rosner, *$QQ\bar{Q}\bar{Q}$ states: masses, production, and decays*, Phys. Rev. **D95** (2017) 034011, [arXiv:1611.00348](#).

- [16] N. Barnea, J. Vijande, and A. Valcarce, *Four-quark spectroscopy within the hyperspherical formalism*, Phys. Rev. **D73** (2006) 054004, arXiv:hep-ph/0604010.
- [17] V. R. Debastiani and F. S. Navarra, *A non-relativistic model for the $[cc][\bar{c}\bar{c}]$ tetraquark*, Chin. Phys. **C43** (2019) 013105, arXiv:1706.07553.
- [18] M.-S. Liu, Q.-F. L, X.-H. Zhong, and Q. Zhao, *All-heavy tetraquarks*, Phys. Rev. **D100** (2019) 016006, arXiv:1901.02564.
- [19] W. Chen *et al.*, *Hunting for exotic doubly hidden-charm/bottom tetraquark states*, Phys. Lett. B **773** (2017) 247, arXiv:1605.01647.
- [20] G.-J. Wang, L. Meng, and S.-L. Zhu, *Spectrum of the fully-heavy tetraquark state $QQ\bar{Q}'\bar{Q}'$* , Phys. Rev. D **100** (2019) 096013, arXiv:1907.05177.
- [21] M. A. Bedolla, J. Ferretti, C. D. Roberts, and E. Santopinto, *Spectrum of fully-heavy tetraquarks from a diquark+antidiquark perspective*, arXiv:1911.00960.
- [22] R. J. Lloyd and J. P. Vary, *All-charm tetraquarks*, Phys. Rev. D **70** (2004) 014009, arXiv:hep-ph/0311179.
- [23] X. Chen, *Fully-charm tetraquarks: $cc\bar{c}\bar{c}$* , arXiv:2001.06755.
- [24] Z.-G. Wang and Z.-Y. Di, *Analysis of the vector and axialvector $QQ\bar{Q}\bar{Q}$ tetraquark states with QCD sum rules*, Acta Phys. Polon. B **50** (2019) 1335, arXiv:1807.08520.
- [25] M. N. Anwar *et al.*, *Spectroscopy and decays of the fully-heavy tetraquarks*, Eur. Phys. J. C **78** (2018) 647, arXiv:1710.02540.
- [26] Y.-R. Liu *et al.*, *Pentaquark and tetraquark states*, Prog. Part. Nucl. Phys. **107** (2019) 237, arXiv:1903.11976.
- [27] A. Esposito and A. D. Polosa, *A $b\bar{b}b\bar{b}$ di-bottomonium at the LHC?*, Eur. Phys. J. C **78** (2018) 782, arXiv:1807.06040.
- [28] C. Becchi, A. Giachino, L. Maiani, and E. Santopinto, *Search for $b\bar{b}b\bar{b}$ tetraquark decays in 4 muons, B^+B^- , $B^0\bar{B}^0$ and $B_s^0\bar{B}_s^0$ channels at LHC*, Phys. Lett. B **806** (2020) 135495, arXiv:2002.11077.
- [29] Y. Bai, S. Lu, and J. Osborne, *Beauty-full tetraquarks*, Phys. Lett. B **798** (2019) 134930, arXiv:1612.00012.
- [30] J.-M. Richard, A. Valcarce, and J. Vijande, *String dynamics and metastability of all-heavy tetraquarks*, Phys. Rev. D **95** (2017) 054019, arXiv:1703.00783.
- [31] Y. Chen and R. Vega-Morales, *Golden probe of the $di-\Upsilon$ threshold*, arXiv:1710.02738.

- [32] X. Chen, *Fully-heavy tetraquarks: $bb\bar{c}\bar{c}$ and $bc\bar{b}\bar{c}$* , Phys. Rev. D **100** (2019) 094009, [arXiv:1908.08811](#).
- [33] A. V. Berezhnoy, A. K. Likhoded, and A. A. Novoselov, *Υ -meson pair production at LHC*, Phys. Rev. D **87** (2013) 054023, [arXiv:1210.5754](#).
- [34] M. Karliner and J. L. Rosner, *Baryons with two heavy quarks: Masses, production, decays, and detection*, Phys. Rev. **D90** (2014) 094007, [arXiv:1408.5877](#).
- [35] LHCb collaboration, R. Aaij *et al.*, *Observation of the doubly charmed baryon Ξ_{cc}^{++}* , Phys. Rev. Lett. **119** (2017) 112001, [arXiv:1707.01621](#).
- [36] LHCb collaboration, R. Aaij *et al.*, *Isospin amplitudes in $\Lambda_b^0 \rightarrow J/\psi \Lambda(\Sigma^0)$ and $\Xi_b^0 \rightarrow J/\psi \Xi^0(\Lambda)$ decays*, Phys. Rev. Lett. **124** (2020) 111802, [arXiv:1912.02110](#).
- [37] LHCb collaboration, R. Aaij *et al.*, *Search for beautiful tetraquarks in the $\Upsilon(1S)\mu^+\mu^-$ invariant-mass spectrum*, JHEP **10** (2018) 086, [arXiv:1806.09707](#).
- [38] CMS collaboration, A. M. Sirunyan *et al.*, *Measurement of the $\Upsilon(1S)$ pair production cross section and search for resonances decaying to $\Upsilon(1S)\mu^+\mu^-$ in proton-proton collisions at $\sqrt{s} = 13$ TeV*, [arXiv:2002.06393](#).
- [39] G. Calucci and D. Treleani, *Minijets and the two-body parton correlation*, Phys. Rev. **D57** (1998) 503, [arXiv:hep-ph/9707389](#).
- [40] G. Calucci and D. Treleani, *Proton structure in transverse space and the effective cross section*, Phys. Rev. **D60** (1999) 054023, [arXiv:hep-ph/9902479](#).
- [41] A. Del Fabbro and D. Treleani, *Scale factor in double parton collisions and parton densities in transverse space*, Phys. Rev. **D63** (2001) 057901, [arXiv:hep-ph/0005273](#).
- [42] L.-P. Sun, H. Han, and K.-T. Chao, *Impact of J/ψ pair production at the LHC and predictions in nonrelativistic QCD*, Phys. Rev. **D94** (2016) 074033, [arXiv:1404.4042](#).
- [43] A. K. Likhoded, A. V. Luchinsky, and S. V. Poslavsky, *Production of $J/\psi + \chi_c$ and $J/\psi + J/\psi$ with real gluon emission at LHC*, Phys. Rev. **D94** (2016) 054017, [arXiv:1606.06767](#).
- [44] H.-S. Shao, HELAC-ONIA: *An automatic matrix element generator for heavy quarkonium physics*, Comput. Phys. Commun. **184** (2013) 2562, [arXiv:1212.5293](#).
- [45] H.-S. Shao, HELAC-ONIA 2.0: *An upgraded matrix-element and event generator for heavy quarkonium physics*, Comput. Phys. Commun. **198** (2016) 238, [arXiv:1507.03435](#).
- [46] S. P. Baranov, *Pair production of J/ψ mesons in the k_t -factorization approach*, Phys. Rev. **D84** (2011) 054012.

- [47] J.-P. Lansberg and H.-S. Shao, *Production of $J/\psi + \eta_c$ versus $J/\psi + J/\psi$ at the LHC: Importance of real α_s^5 corrections*, Phys. Rev. Lett. **111** (2013) 122001, arXiv:1308.0474.
- [48] J.-P. Lansberg and H.-S. Shao, *J/ψ -pair production at large momenta: indications for double parton scatterings and large α_s^5 contributions*, Phys. Lett. **B751** (2015) 479, arXiv:1410.8822.
- [49] J.-P. Lansberg and H.-S. Shao, *Double-quarkonium production at a fixed-target experiment at the LHC (AFTER@LHC)*, Nucl. Phys. **B900** (2015) 273, arXiv:1504.06531.
- [50] CMS collaboration, V. Khachatryan *et al.*, *Measurement of prompt J/ψ pair production in pp collisions at $\sqrt{s} = 7$ TeV*, JHEP **09** (2014) 094, arXiv:1406.0484.
- [51] ATLAS collaboration, M. Aaboud *et al.*, *Measurement of the prompt J/ψ pair production cross-section in pp collisions at $\sqrt{s} = 8$ TeV with the ATLAS detector*, Eur. Phys. J. C **77** (2017) 76, arXiv:1612.02950.
- [52] LHCb collaboration, R. Aaij *et al.*, *Observation of double charm production involving open charm in pp collisions at $\sqrt{s} = 7$ TeV*, JHEP **06** (2012) 141, Addendum *ibid.* **03** (2014) 108, arXiv:1205.0975.
- [53] LHCb collaboration, R. Aaij *et al.*, *Observation of associated production of a Z boson with a D meson in the forward region*, JHEP **04** (2014) 091, arXiv:1401.3245.
- [54] LHCb collaboration, R. Aaij *et al.*, *Production of associated Υ and open charm hadrons in pp collisions at $\sqrt{s} = 7$ and 8 TeV via double parton scattering*, JHEP **07** (2016) 052, arXiv:1510.05949.
- [55] LHCb collaboration, R. Aaij *et al.*, *Observation of J/ψ -pair production in pp collisions at $\sqrt{s} = 7$ TeV*, Phys. Lett. **B707** (2012) 52, arXiv:1109.0963.
- [56] LHCb collaboration, R. Aaij *et al.*, *Measurement of the J/ψ pair production cross-section in pp collisions at $\sqrt{s} = 13$ TeV*, JHEP **06** (2017) 047, Erratum *ibid.* **10** (2017) 068, arXiv:1612.07451.
- [57] LHCb collaboration, A. A. Alves Jr. *et al.*, *The LHCb detector at the LHC*, JINST **3** (2008) S08005.
- [58] LHCb collaboration, R. Aaij *et al.*, *LHCb detector performance*, Int. J. Mod. Phys. **A30** (2015) 1530022, arXiv:1412.6352.
- [59] LHCb collaboration, R. Aaij *et al.*, *Measurement of b -hadron masses*, Phys. Lett. **B708** (2012) 241, arXiv:1112.4896.
- [60] T. Sjöstrand, S. Mrenna, and P. Skands, *A brief introduction to PYTHIA 8.1*, Comput. Phys. Commun. **178** (2008) 852, arXiv:0710.3820.

- [61] I. Belyaev *et al.*, *Handling of the generation of primary events in Gauss, the LHCb simulation framework*, J. Phys. Conf. Ser. **331** (2011) 032047.
- [62] D. J. Lange, *The EvtGen particle decay simulation package*, Nucl. Instrum. Meth. **A462** (2001) 152.
- [63] P. Golonka and Z. Was, *PHOTOS Monte Carlo: A precision tool for QED corrections in Z and W decays*, Eur. Phys. J. **C45** (2006) 97, [arXiv:hep-ph/0506026](#).
- [64] Geant4 collaboration, J. Allison *et al.*, *Geant4 developments and applications*, IEEE Trans. Nucl. Sci. **53** (2006) 270.
- [65] M. Clemencic *et al.*, *The LHCb simulation application, Gauss: Design, evolution and experience*, J. Phys. Conf. Ser. **331** (2011) 032023.
- [66] W. D. Hulsbergen, *Decay chain fitting with a Kalman filter*, Nucl. Instrum. Meth. **A552** (2005) 566, [arXiv:physics/0503191](#).
- [67] T. Skwarnicki, *A study of the radiative cascade transitions between the Upsilon-prime and Upsilon resonances*, PhD thesis, Institute of Nuclear Physics, Krakow, 1986, DESY-F31-86-02.
- [68] LHCb collaboration, R. Aaij *et al.*, *Measurement of J/ψ production in pp collisions at $\sqrt{s} = 7$ TeV*, Eur. Phys. J. **C71** (2011) 1645, [arXiv:1103.0423](#).
- [69] LHCb collaboration, R. Aaij *et al.*, *Production of J/ψ and Υ mesons in pp collisions at $\sqrt{s} = 8$ TeV*, JHEP **06** (2013) 064, [arXiv:1304.6977](#).
- [70] LHCb collaboration, R. Aaij *et al.*, *Measurement of forward J/ψ production cross-sections in pp collisions at $\sqrt{s} = 13$ TeV*, JHEP **10** (2015) 172, Erratum *ibid.* **05** (2017) 063, [arXiv:1509.00771](#).
- [71] Particle Data Group, M. Tanabashi *et al.*, *Review of particle physics*, Phys. Rev. **D98** (2018) 030001, and 2019 update.
- [72] M. Pivk and F. R. Le Diberder, *sPlot: A statistical tool to unfold data distributions*, Nucl. Instrum. Meth. **A555** (2005) 356, [arXiv:physics/0402083](#).
- [73] Y. Xie, *sFit: a method for background subtraction in maximum likelihood fit*, [arXiv:0905.0724](#).
- [74] E. Braaten, L.-P. He, K. Ingles, and J. Jiang, *Charm-meson triangle singularity in e^+e^- annihilation into $D^{*0}\bar{D}^0 + \gamma$* , Phys. Rev. D **101** (2020) 096020, [arXiv:2004.12841](#).
- [75] X.-H. Liu, Q. Wang, and Q. Zhao, *Understanding the newly observed heavy pentaquark candidates*, Phys. Lett. B **757** (2016) 231, [arXiv:1507.05359](#).

- [76] J.-J. Xie, L.-S. Geng, and E. Oset, *$f_2(1810)$ as a triangle singularity*, Phys. Rev. D **95** (2017) 034004, [arXiv:1610.09592](#).
- [77] F.-K. Guo *et al.*, *Interplay of quark and meson degrees of freedom in near-threshold states: A practical parametrization for line shapes*, Phys. Rev. D **93** (2016) 074031, [arXiv:1602.00940](#).
- [78] C. Langenbruch, *Parameter uncertainties in weighted unbinned maximum likelihood fits*, [arXiv:1911.01303](#).
- [79] G. Cowan, K. Cranmer, E. Gross, and O. Vitells, *Asymptotic formulae for likelihood-based tests of new physics*, Eur. Phys. J. C **71** (2011) 1554, Erratum *ibid.* **73** (2013) 2501, [arXiv:1007.1727](#).

LHCb collaboration

R. Aaij³¹, C. Abellán Beteta⁴⁹, T. Ackernley⁵⁹, B. Adeva⁴⁵, M. Adinolfi⁵³, H. Afsharnia⁹, C.A. Aidala⁸², S. Aiola²⁵, Z. Ajaltouni⁹, S. Akar⁶⁴, J. Albrecht¹⁴, F. Alessio⁴⁷, M. Alexander⁵⁸, A. Alfonso Albero⁴⁴, Z. Aliouche⁶¹, G. Alkhazov³⁷, P. Alvarez Cartelle⁴⁷, A.A. Alves Jr⁴⁵, S. Amato², Y. Amhis¹¹, L. An²¹, L. Anderlini²¹, G. Andreassi⁴⁸, A. Andreianov³⁷, M. Andreotti²⁰, F. Archilli¹⁶, A. Artamonov⁴³, M. Artuso⁶⁷, K. Arzymatov⁴¹, E. Aslanides¹⁰, M. Atzeni⁴⁹, B. Audurier¹¹, S. Bachmann¹⁶, M. Bachmayer⁴⁸, J.J. Back⁵⁵, S. Baker⁶⁰, P. Baladron Rodriguez⁴⁵, V. Balagura^{11,b}, W. Baldini²⁰, J. Baptista Leite¹, R.J. Barlow⁶¹, S. Barsuk¹¹, W. Barter⁶⁰, M. Bartolini^{23,47,h}, F. Baryshnikov⁷⁹, J.M. Basels¹³, G. Bassi²⁸, V. Batozskaya³⁵, B. Batsukh⁶⁷, A. Battig¹⁴, A. Bay⁴⁸, M. Becker¹⁴, F. Bedeschi²⁸, I. Bediaga¹, A. Beiter⁶⁷, V. Belavin⁴¹, S. Belin²⁶, V. Bellee⁴⁸, K. Belous⁴³, I. Belyaev³⁸, G. Bencivenni²², E. Ben-Haim¹², A. Berezhniov³⁹, R. Bernet⁴⁹, D. Berninghoff¹⁶, H.C. Bernstein⁶⁷, C. Bertella⁴⁷, E. Bertholet¹², A. Bertolin²⁷, C. Betancourt⁴⁹, F. Betti^{19,e}, M.O. Bettler⁵⁴, Ia. Bezshyiko⁴⁹, S. Bhasin⁵³, J. Bhom³³, L. Bian⁷², M.S. Bieker¹⁴, S. Bifani⁵², P. Billoir¹², M. Birch⁶⁰, F.C.R. Bishop⁵⁴, A. Bizzeti^{21,t}, M. Bjørn⁶², M.P. Blago⁴⁷, T. Blake⁵⁵, F. Blanc⁴⁸, S. Blusk⁶⁷, D. Bobulska⁵⁸, V. Bocci³⁰, J.A. Boelhave¹⁴, O. Boente Garcia⁴⁵, T. Boettcher⁶³, A. Boldyrev⁸⁰, A. Bondar^{42,w}, N. Bondar^{37,47}, S. Borghi⁶¹, M. Borisyak⁴¹, M. Borsato¹⁶, J.T. Borsuk³³, S.A. Bouchiba⁴⁸, T.J.V. Bowcock⁵⁹, A. Boyer⁴⁷, C. Bozzi²⁰, M.J. Bradley⁶⁰, S. Braun⁶⁵, A. Brea Rodriguez⁴⁵, M. Brodski⁴⁷, J. Brodzicka³³, A. Brossa Gonzalo⁵⁵, D. Brundu²⁶, E. Buchanan⁵³, A. Buonauro⁴⁹, C. Burr⁴⁷, A. Bursche²⁶, A. Butkevich⁴⁰, J.S. Butter³¹, J. Buytaert⁴⁷, W. Byczynski⁴⁷, S. Cadeddu²⁶, H. Cai⁷², R. Calabrese^{20,g}, L. Calero Diaz²², S. Cali²², R. Calladine⁵², M. Calvi^{24,i}, M. Calvo Gomez^{44,l}, P. Camargo Magalhaes⁵³, A. Camboni⁴⁴, P. Campana²², D.H. Campora Perez⁴⁷, A.F. Campoverde Quezada⁵, S. Capelli^{24,i}, L. Capriotti^{19,e}, A. Carbone^{19,e}, G. Carboni²⁹, R. Cardinale^{23,h}, A. Cardini²⁶, I. Carli⁶, P. Carniti^{24,i}, K. Carvalho Akiba³¹, A. Casais Vidal⁴⁵, G. Casse⁵⁹, M. Cattaneo⁴⁷, G. Cavallero⁴⁷, S. Celani⁴⁸, R. Cenci²⁸, J. Cerasoli¹⁰, A.J. Chadwick⁵⁹, M.G. Chapman⁵³, M. Charles¹², Ph. Charpentier⁴⁷, G. Chatzikonstantinidis⁵², M. Chefdeville⁸, C. Chen³, S. Chen²⁶, A. Chernov³³, S.-G. Chitic⁴⁷, V. Chobanova⁴⁵, S. Cholak⁴⁸, M. Chruszcz³³, A. Chubykin³⁷, V. Chulikov³⁷, P. Ciambrone²², M.F. Cicala⁵⁵, X. Cid Vidal⁴⁵, G. Ciezarek⁴⁷, F. Cindolo¹⁹, P.E.L. Clarke⁵⁷, M. Clemencic⁴⁷, H.V. Cliff⁵⁴, J. Closier⁴⁷, J.L. Cobbledick⁶¹, V. Coco⁴⁷, J.A.B. Coelho¹¹, J. Cogan¹⁰, E. Cogneras⁹, L. Cojocariu³⁶, P. Collins⁴⁷, T. Colombo⁴⁷, A. Contu²⁶, N. Cooke⁵², G. Coombs⁵⁸, S. Coquereau⁴⁴, G. Corti⁴⁷, C.M. Costa Sobral⁵⁵, B. Couturier⁴⁷, D.C. Craik⁶³, J. Crkovská⁶⁶, M. Cruz Torres^{1,y}, R. Currie⁵⁷, C.L. Da Silva⁶⁶, E. Dall'Occo¹⁴, J. Dalseno⁴⁵, C. D'Ambrosio⁴⁷, A. Danilina³⁸, P. d'Argent⁴⁷, A. Davis⁶¹, O. De Aguiar Francisco⁴⁷, K. De Bruyn⁴⁷, S. De Capua⁶¹, M. De Cian⁴⁸, J.M. De Miranda¹, L. De Paula², M. De Serio^{18,d}, D. De Simone⁴⁹, P. De Simone²², J.A. de Vries⁷⁷, C.T. Dean⁶⁶, W. Dean⁸², D. Decamp⁸, L. Del Buono¹², B. Delaney⁵⁴, H.-P. Dembinski¹⁴, A. Dendek³⁴, X. Denis⁷², V. Denysenko⁴⁹, D. Derkach⁸⁰, O. Deschamps⁹, F. Desse¹¹, F. Dettori^{26,f}, B. Dey⁷, A. Di Canto⁴⁷, P. Di Nezza²², S. Didenko⁷⁹, H. Dijkstra⁴⁷, V. Dobishuk⁵¹, A.M. Donohoe¹⁷, F. Dordei²⁶, M. Dorigo^{28,x}, A.C. dos Reis¹, L. Douglas⁵⁸, A. Dovbnya⁵⁰, A.G. Downes⁸, K. Dreimanis⁵⁹, M.W. Dudek³³, L. Dufour⁴⁷, P. Durante⁴⁷, J.M. Durham⁶⁶, D. Dutta⁶¹, M. Dziewiecki¹⁶, A. Dziurda³³, A. Dzyuba³⁷, S. Easo⁵⁶, U. Egede⁶⁹, V. Egorychev³⁸, S. Eidelman^{42,w}, S. Eisenhardt⁵⁷, S. Ek-In⁴⁸, L. Eklund⁵⁸, S. Ely⁶⁷, A. Ene³⁶, E. Epple⁶⁶, S. Escher¹³, J. Eschle⁴⁹, S. Esen³¹, T. Evans⁴⁷, A. Falabella¹⁹, J. Fan³, Y. Fan⁵, B. Fang⁷², N. Farley⁵², S. Farry⁵⁹, D. Fazzini¹¹, P. Fedin³⁸,

M. Féo⁴⁷, P. Fernandez Declara⁴⁷, A. Fernandez Prieto⁴⁵, F. Ferrari^{19,e}, L. Ferreira Lopes⁴⁸,
F. Ferreira Rodrigues², S. Ferreres Sole³¹, M. Ferrillo⁴⁹, M. Ferro-Luzzi⁴⁷, S. Filippov⁴⁰,
R.A. Fini¹⁸, M. Fiorini^{20,g}, M. Firlej³⁴, K.M. Fischer⁶², C. Fitzpatrick⁶¹, T. Fiutowski³⁴,
F. Fleuret^{11,b}, M. Fontana⁴⁷, F. Fontanelli^{23,h}, R. Forty⁴⁷, V. Franco Lima⁵⁹,
M. Franco Sevilla⁶⁵, M. Frank⁴⁷, E. Franzoso²⁰, G. Frau¹⁶, C. Frei⁴⁷, D.A. Friday⁵⁸, J. Fu^{25,p},
Q. Fuehring¹⁴, W. Funk⁴⁷, E. Gabriel⁵⁷, T. Gaintseva⁴¹, A. Gallas Torreira⁴⁵, D. Galli^{19,e},
S. Gallorini²⁷, S. Gambetta⁵⁷, Y. Gan³, M. Gandelman², P. Gandini²⁵, Y. Gao⁴, M. Garau²⁶,
L.M. Garcia Martin⁴⁶, P. Garcia Moreno⁴⁴, J. García Pardiñas⁴⁹, B. Garcia Plana⁴⁵,
F.A. Garcia Rosales¹¹, L. Garrido⁴⁴, D. Gascon⁴⁴, C. Gaspar⁴⁷, R.E. Geertsema³¹, D. Gerick¹⁶,
E. Gersabeck⁶¹, M. Gersabeck⁶¹, T. Gershon⁵⁵, D. Gerstel¹⁰, Ph. Ghez⁸, V. Gibson⁵⁴,
A. Gioventù⁴⁵, P. Gironella Gironell⁴⁴, L. Giubega³⁶, C. Giugliano^{20,g}, K. Gizdov⁵⁷,
V.V. Gligorov¹², C. Göbel⁷⁰, E. Golobardes^{44,l}, D. Golubkov³⁸, A. Golutvin^{60,79}, A. Gomes^{1,a},
M. Goncerz³³, P. Gorbounov³⁸, I.V. Gorelov³⁹, C. Gotti^{24,i}, E. Govorkova³¹, J.P. Grabowski¹⁶,
R. Graciani Diaz⁴⁴, T. Grammatico¹², L.A. Granado Cardoso⁴⁷, E. Graugés⁴⁴, E. Graverini⁴⁸,
G. Graziani²¹, A. Grecu³⁶, L.M. Greeven³¹, P. Griffith^{20,g}, L. Grillo⁶¹, L. Gruber⁴⁷,
B.R. Gruberg Cazon⁶², C. Gu³, M. Guarise²⁰, P. A. Günther¹⁶, E. Gushchin⁴⁰, A. Guth¹³,
Yu. Guz^{43,47}, T. Gys⁴⁷, T. Hadavizadeh⁶⁹, G. Haefeli⁴⁸, C. Haen⁴⁷, S.C. Haines⁵⁴,
P.M. Hamilton⁶⁵, Q. Han⁷, X. Han¹⁶, T.H. Hancock⁶², S. Hansmann-Menzemer¹⁶, N. Harnew⁶²,
T. Harrison⁵⁹, R. Hart³¹, C. Hasse⁴⁷, M. Hatch⁴⁷, J. He⁵, M. Hecker⁶⁰, K. Heijhoff³¹,
K. Heinicke¹⁴, A.M. Hennequin⁴⁷, K. Hennessy⁵⁹, L. Henry^{25,46}, J. Heuel¹³, A. Hicheur⁶⁸,
D. Hill⁶², M. Hilton⁶¹, S.E. Hollitt¹⁴, P.H. Hopchev⁴⁸, J. Hu¹⁶, J. Hu⁷¹, W. Hu⁷, W. Huang⁵,
W. Hulsbergen³¹, T. Humair⁶⁰, R.J. Hunter⁵⁵, M. Hushchyn⁸⁰, D. Hutchcroft⁵⁹, D. Hynds³¹,
P. Ibis¹⁴, M. Idzik³⁴, D. Ilin³⁷, P. Ilten⁵², A. Inglessi³⁷, K. Ivshin³⁷, R. Jacobsson⁴⁷,
S. Jakobsen⁴⁷, E. Jans³¹, B.K. Jashal⁴⁶, A. Jawahery⁶⁵, V. Jevtic¹⁴, F. Jiang³, M. John⁶²,
D. Johnson⁴⁷, C.R. Jones⁵⁴, T.P. Jones⁵⁵, B. Jost⁴⁷, N. Jurik⁶², S. Kandybei⁵⁰, Y. Kang³,
M. Karacson⁴⁷, J.M. Kariuki⁵³, N. Kazeev⁸⁰, M. Kecke¹⁶, F. Keizer^{54,47}, M. Kelsey⁶⁷,
M. Kenzie⁵⁵, T. Ketel³², B. Khanji⁴⁷, A. Kharisova⁸¹, S. Kholodenko⁴³, K.E. Kim⁶⁷, T. Kirn¹³,
V.S. Kirsabom⁴⁸, O. Kitouni⁶³, S. Klaver²², K. Klimaszewski³⁵, S. Koliiev⁵¹, A. Kondybayeva⁷⁹,
A. Konoplyannikov³⁸, P. Kopciwicz³⁴, R. Kopecna¹⁶, P. Koppenburg³¹, M. Korolev³⁹,
I. Kostyuk^{31,51}, O. Kot⁵¹, S. Kotriakhova³⁷, P. Kravchenko³⁷, L. Kravchuk⁴⁰, R.D. Krawczyk⁴⁷,
M. Kreps⁵⁵, F. Kress⁶⁰, S. Kretschmar¹³, P. Krokovny^{42,w}, W. Krupa³⁴, W. Krzemien³⁵,
W. Kucewicz^{83,33,k}, M. Kucharczyk³³, V. Kudryavtsev^{42,w}, H.S. Kuindersma³¹, G.J. Kunde⁶⁶,
T. Kvaratskheliya³⁸, D. Lacarrere⁴⁷, G. Lafferty⁶¹, A. Lai²⁶, A. Lampis²⁶, D. Lancierini⁴⁹,
J.J. Lane⁶¹, R. Lane⁵³, G. Lanfranchi²², C. Langenbruch¹³, O. Lantwin^{49,79}, T. Latham⁵⁵,
F. Lazzari^{28,u}, R. Le Gac¹⁰, S.H. Lee⁸², R. Lefèvre⁹, A. Leflat^{39,47}, S. Legotin⁷⁹, O. Leroy¹⁰,
T. Lesiak³³, B. Leverington¹⁶, H. Li⁷¹, L. Li⁶², P. Li¹⁶, X. Li⁶⁶, Y. Li⁶, Y. Li⁶, Z. Li⁶⁷,
X. Liang⁶⁷, T. Lin⁶⁰, R. Lindner⁴⁷, V. Lisovskyi¹⁴, R. Litvinov²⁶, G. Liu⁷¹, H. Liu⁵, S. Liu⁶,
X. Liu³, A. Loi²⁶, J. Lomba Castro⁴⁵, I. Longstaff⁵⁸, J.H. Lopes², G. Loustau⁴⁹, G.H. Lovell⁵⁴,
Y. Lu⁶, D. Lucchesi^{27,n}, S. Luchuk⁴⁰, M. Lucio Martinez³¹, V. Lukashenko³¹, Y. Luo³,
A. Lupato⁶¹, E. Luppi^{20,g}, O. Lupton⁵⁵, A. Lusiani^{28,s}, X. Lyu⁵, L. Ma⁶, S. Maccolini^{19,e},
F. Machefert¹¹, F. Maciuc³⁶, V. Macko⁴⁸, P. Mackowiak¹⁴, S. Maddrell-Mander⁵³,
L.R. Madhan Mohan⁵³, O. Maev³⁷, A. Maevskiy⁸⁰, D. Maisuzenko³⁷, M.W. Majewski³⁴,
S. Malde⁶², B. Malecki⁴⁷, A. Malinin⁷⁸, T. Maltsev^{42,w}, H. Malygina¹⁶, G. Manca^{26,f},
G. Mancinelli¹⁰, R. Manera Escalero⁴⁴, D. Manuzzi^{19,e}, D. Marangotto^{25,p}, J. Maratas^{9,v},
J.F. Marchand⁸, U. Marconi¹⁹, S. Mariani^{21,21,47}, C. Marin Benito¹¹, M. Marinangeli⁴⁸,
P. Marino⁴⁸, J. Marks¹⁶, P.J. Marshall⁵⁹, G. Martellotti³⁰, L. Martinazzoli⁴⁷, M. Martinelli^{24,i},

D. Martinez Santos⁴⁵, F. Martinez Vidal⁴⁶, A. Massafferri¹, M. Materok¹³, R. Matev⁴⁷,
 A. Mathad⁴⁹, Z. Mathe⁴⁷, V. Matiunin³⁸, C. Matteuzzi²⁴, K.R. Mattioli⁸², A. Mauri⁴⁹,
 E. Maurice^{11,b}, M. Mazurek³⁵, M. McCann⁶⁰, L. McConnell¹⁷, T.H. Mcgrath⁶¹, A. McNab⁶¹,
 R. McNulty¹⁷, J.V. Mead⁵⁹, B. Meadows⁶⁴, C. Meaux¹⁰, G. Meier¹⁴, N. Meinert⁷⁵,
 D. Melnychuk³⁵, S. Meloni^{24,i}, M. Merk^{31,77}, A. Merli²⁵, L. Meyer Garcia², M. Mikhasenko⁴⁷,
 D.A. Milanes⁷³, E. Millard⁵⁵, M.-N. Minard⁸, L. Minzoni^{20,g}, S.E. Mitchell⁵⁷, B. Mitreska⁶¹,
 D.S. Mitzel⁴⁷, A. Mödden¹⁴, R.A. Mohammed⁶², R.D. Moise⁶⁰, T. Mombächer¹⁴, I.A. Monroy⁷³,
 S. Monteil⁹, M. Morandin²⁷, G. Morello²², M.J. Morello^{28,s}, J. Moron³⁴, A.B. Morris⁷⁴,
 A.G. Morris⁵⁵, R. Mountain⁶⁷, H. Mu³, F. Muheim⁵⁷, M. Mukherjee⁷, M. Mulder⁴⁷, D. Müller⁴⁷,
 K. Müller⁴⁹, C.H. Murphy⁶², D. Murray⁶¹, P. Muzzetto²⁶, P. Naik⁵³, T. Nakada⁴⁸,
 R. Nandakumar⁵⁶, T. Nanut⁴⁸, I. Nasteva², M. Needham⁵⁷, I. Neri^{20,g}, N. Neri^{25,p}, S. Neubert⁷⁴,
 N. Neufeld⁴⁷, R. Newcombe⁶⁰, T.D. Nguyen⁴⁸, C. Nguyen-Mau^{48,m}, E.M. Niel¹¹, S. Nieswand¹³,
 N. Nikitin³⁹, N.S. Nolte⁴⁷, C. Nunez⁸², A. Oblakowska-Mucha³⁴, V. Obraztsov⁴³, S. Ogilvy⁵⁸,
 D.P. O'Hanlon⁵³, R. Oldeman^{26,f}, C.J.G. Onderwater⁷⁶, J. D. Osborn⁸², A. Ossowska³³,
 J.M. Otalora Goicochea², T. Ovsianikova³⁸, P. Owen⁴⁹, A. Oyanguren⁴⁶, B. Pagare⁵⁵,
 P.R. Pais⁴⁷, T. Pajero^{28,47,s}, A. Palano¹⁸, M. Palutan²², Y. Pan⁶¹, G. Panshin⁸¹,
 A. Papanestis⁵⁶, M. Pappagallo⁵⁷, L.L. Pappalardo^{20,g}, C. Pappenheimer⁶⁴, W. Parker⁶⁵,
 C. Parkes⁶¹, C.J. Parkinson⁴⁵, B. Passalacqua²⁰, G. Passaleva^{21,47}, A. Pastore¹⁸, M. Patel⁶⁰,
 C. Patrignani^{19,e}, A. Pearce⁴⁷, A. Pellegrino³¹, M. Pepe Altarelli⁴⁷, S. Perazzini¹⁹, D. Pereima³⁸,
 P. Perret⁹, K. Petridis⁵³, A. Petrolini^{23,h}, A. Petrov⁷⁸, S. Petrucci⁵⁷, M. Petruzzo²⁵,
 A. Philippov⁴¹, L. Pica²⁸, B. Pietrzyk⁸, G. Pietrzyk⁴⁸, M. Pili⁶², D. Pinci³⁰, J. Pinzino⁴⁷,
 F. Pisani⁴⁷, A. Piucci¹⁶, V. Placinta³⁶, S. Playfer⁵⁷, J. Plews⁵², M. Plo Casasus⁴⁵, F. Polci¹²,
 M. Poli Lener²², M. Poliakova⁶⁷, A. Poluektov¹⁰, N. Polukhina^{79,c}, I. Polyakov⁶⁷, E. Polycarpo²,
 G.J. Pomery⁵³, S. Ponce⁴⁷, A. Popov⁴³, D. Popov^{5,47}, S. Popov⁴¹, S. Poslavskii⁴³, K. Prasanth³³,
 L. Promberger⁴⁷, C. Prouve⁴⁵, V. Pugatch⁵¹, A. Puig Navarro⁴⁹, H. Pullen⁶², G. Punzi^{28,o},
 R. Puthumanaim Krishnankuttyelayath¹⁰, W. Qian⁵, J. Qin⁵, R. Quagliani¹², B. Quintana⁸,
 N.V. Raab¹⁷, R.I. Rabadan Trejo¹⁰, B. Rachwal³⁴, J.H. Rademacker⁵³, M. Rama²⁸,
 M. Ramos Pernas⁴⁵, M.S. Rangel², F. Ratnikov^{41,80}, G. Raven³², M. Reboud⁸, F. Redi⁴⁸,
 F. Reiss¹², C. Remon Alepuz⁴⁶, Z. Ren³, V. Renaudin⁶², R. Ribatti²⁸, S. Ricciardi⁵⁶,
 D.S. Richards⁵⁶, K. Rinnert⁵⁹, P. Robbe¹¹, A. Robert¹², G. Robertson⁵⁷, A.B. Rodrigues⁴⁸,
 E. Rodrigues⁵⁹, J.A. Rodriguez Lopez⁷³, M. Roehrken⁴⁷, A. Rollings⁶², V. Romanovskiy⁴³,
 M. Romero Lamas⁴⁵, A. Romero Vidal⁴⁵, J.D. Roth⁸², M. Rotondo²², M.S. Rudolph⁶⁷, T. Ruf⁴⁷,
 J. Ruiz Vidal⁴⁶, A. Ryzhikov⁸⁰, J. Ryzka³⁴, J.J. Saborido Silva⁴⁵, N. Sagidova³⁷, N. Sahoo⁵⁵,
 B. Saitta^{26,f}, C. Sanchez Gras³¹, C. Sanchez Mayordomo⁴⁶, R. Santacesaria³⁰,
 C. Santamarina Rios⁴⁵, M. Santimaria²², E. Santovetti^{29,j}, D. Saranin⁷⁹, G. Sarpis⁶¹,
 M. Sarpis⁷⁴, A. Sarti³⁰, C. Satriano^{30,r}, A. Satta²⁹, M. Sau⁵, D. Savrina^{38,39}, H. Sazak⁹,
 L.G. Scantlebury Smead⁶², S. Schael¹³, M. Schellenberg¹⁴, M. Schiller⁵⁸, H. Schindler⁴⁷,
 M. Schmelling¹⁵, T. Schmelzer¹⁴, B. Schmidt⁴⁷, O. Schneider⁴⁸, A. Schopper⁴⁷, H.F. Schreiner⁶⁴,
 M. Schubiger³¹, S. Schulte⁴⁸, M.H. Schune¹¹, R. Schwemmer⁴⁷, B. Sciascia²², A. Sciubba²²,
 S. Sellam⁶⁸, A. Semennikov³⁸, A. Sergi^{52,47}, N. Serra⁴⁹, J. Serrano¹⁰, L. Sestini²⁷, A. Seuthe¹⁴,
 P. Seyfert⁴⁷, D.M. Shangase⁸², M. Shapkin⁴³, I. Shchemerov⁷⁹, L. Shchutska⁴⁸, T. Shears⁵⁹,
 L. Shekhtman^{42,w}, V. Shevchenko⁷⁸, E.B. Shields^{24,i}, E. Shmanin⁷⁹, J.D. Shupperd⁶⁷,
 B.G. Siddi²⁰, R. Silva Coutinho⁴⁹, L. Silva de Oliveira², G. Simi²⁷, S. Simone^{18,d}, I. Skiba^{20,g},
 N. Skidmore⁷⁴, T. Skwarnicki⁶⁷, M.W. Slater⁵², J.C. Smallwood⁶², J.G. Smeaton⁵⁴,
 A. Smetkina³⁸, E. Smith¹³, M. Smith⁶⁰, A. Snoch³¹, M. Soares¹⁹, L. Soares Lavra⁹,
 M.D. Sokoloff⁶⁴, F.J.P. Soler⁵⁸, A. Solovev³⁷, I. Solovye³⁷, F.L. Souza De Almeida²,

B. Souza De Paula², B. Spaan¹⁴, E. Spadaro Norella^{25,p}, P. Spradlin⁵⁸, F. Stagni⁴⁷, M. Stahl⁶⁴, S. Stahl⁴⁷, P. Stefko⁴⁸, O. Steinkamp^{49,79}, S. Stemmlé¹⁶, O. Stenyakin⁴³, H. Stevens¹⁴, S. Stone⁶⁷, S. Stracka²⁸, M.E. Stramaglia⁴⁸, M. Straticiuc³⁶, D. Strelakina⁷⁹, S. Strokov⁸¹, F. Suljik⁶², J. Sun²⁶, L. Sun⁷², Y. Sun⁶⁵, P. Svihra⁶¹, P.N. Swallow⁵², K. Swientek³⁴, A. Szabelski³⁵, T. Szumlak³⁴, M. Szymanski⁴⁷, S. Taneja⁶¹, Z. Tang³, T. Tekampe¹⁴, F. Teubert⁴⁷, E. Thomas⁴⁷, K.A. Thomson⁵⁹, M.J. Tilley⁶⁰, V. Tisserand⁹, S. T'Jampens⁸, M. Tobin⁶, S. Tolk⁴⁷, L. Tomassetti^{20,g}, D. Torres Machado¹, D.Y. Tou¹², M. Traill⁵⁸, M.T. Tran⁴⁸, E. Trifonova⁷⁹, C. Tripp⁴⁸, A. Tsaregorodtsev¹⁰, G. Tuci^{28,o}, A. Tully⁴⁸, N. Tuning³¹, A. Ukleja³⁵, D.J. Unverzagt¹⁶, A. Usachov³¹, A. Ustyuzhanin^{41,80}, U. Uwer¹⁶, A. Vagner⁸¹, V. Vagnoni¹⁹, A. Valassi⁴⁷, G. Valenti¹⁹, M. van Beuzekom³¹, H. Van Hecke⁶⁶, E. van Herwijnen⁷⁹, C.B. Van Hulse¹⁷, M. van Veghel⁷⁶, R. Vazquez Gomez⁴⁵, P. Vazquez Regueiro⁴⁵, C. Vázquez Sierra³¹, S. Vecchi²⁰, J.J. Velthuis⁵³, M. Veltri^{21,q}, A. Venkateswaran⁶⁷, M. Veronesi³¹, M. Vesterinen⁵⁵, D. Vieira⁶⁴, M. Vieites Diaz⁴⁸, H. Viemann⁷⁵, X. Vilasis-Cardona⁴⁴, E. Vilella Figueras⁵⁹, P. Vincent¹², G. Vitali²⁸, A. Vitkovskiy³¹, A. Vollhardt⁴⁹, D. Vom Bruch¹², A. Vorobyev³⁷, V. Vorobyev^{42,w}, N. Voropaev³⁷, R. Waldi⁷⁵, J. Walsh²⁸, C. Wang¹⁶, J. Wang³, J. Wang⁷², J. Wang⁴, J. Wang⁶, M. Wang³, R. Wang⁵³, Y. Wang⁷, Z. Wang⁴⁹, D.R. Ward⁵⁴, H.M. Wark⁵⁹, N.K. Watson⁵², S.G. Weber¹², D. Websdale⁶⁰, C. Weisser⁶³, B.D.C. Westhenry⁵³, D.J. White⁶¹, M. Whitehead⁵³, D. Wiedner¹⁴, G. Wilkinson⁶², M. Wilkinson⁶⁷, I. Williams⁵⁴, M. Williams^{63,69}, M.R.J. Williams⁶¹, F.F. Wilson⁵⁶, W. Wislicki³⁵, M. Witek³³, L. Witola¹⁶, G. Wormser¹¹, S.A. Wotton⁵⁴, H. Wu⁶⁷, K. Wyllie⁴⁷, Z. Xiang⁵, D. Xiao⁷, Y. Xie⁷, H. Xing⁷¹, A. Xu⁴, J. Xu⁵, L. Xu³, M. Xu⁷, Q. Xu⁵, Z. Xu⁴, D. Yang³, Y. Yang⁵, Z. Yang³, Z. Yang⁶⁵, Y. Yao⁶⁷, L.E. Yeomans⁵⁹, H. Yin⁷, J. Yu⁷, X. Yuan⁶⁷, O. Yushchenko⁴³, K.A. Zarebski⁵², M. Zavertyaev^{15,c}, M. Zdybal³³, O. Zenaiev⁴⁷, M. Zeng³, D. Zhang⁷, L. Zhang³, S. Zhang⁴, Y. Zhang⁴⁷, A. Zhelezov¹⁶, Y. Zheng⁵, X. Zhou⁵, Y. Zhou⁵, X. Zhu³, V. Zhukov^{13,39}, J.B. Zonneveld⁵⁷, S. Zucchelli^{19,e}, D. Zuliani²⁷, G. Zunica⁶¹.

¹ Centro Brasileiro de Pesquisas Físicas (CBPF), Rio de Janeiro, Brazil

² Universidade Federal do Rio de Janeiro (UFRJ), Rio de Janeiro, Brazil

³ Center for High Energy Physics, Tsinghua University, Beijing, China

⁴ School of Physics State Key Laboratory of Nuclear Physics and Technology, Peking University, Beijing, China

⁵ University of Chinese Academy of Sciences, Beijing, China

⁶ Institute Of High Energy Physics (IHEP), Beijing, China

⁷ Institute of Particle Physics, Central China Normal University, Wuhan, Hubei, China

⁸ Univ. Grenoble Alpes, Univ. Savoie Mont Blanc, CNRS, IN2P3-LAPP, Annecy, France

⁹ Université Clermont Auvergne, CNRS/IN2P3, LPC, Clermont-Ferrand, France

¹⁰ Aix Marseille Univ, CNRS/IN2P3, CPPM, Marseille, France

¹¹ Université Paris-Saclay, CNRS/IN2P3, IJCLab, Orsay, France

¹² LPNHE, Sorbonne Université, Paris Diderot Sorbonne Paris Cité, CNRS/IN2P3, Paris, France

¹³ I. Physikalisches Institut, RWTH Aachen University, Aachen, Germany

¹⁴ Fakultät Physik, Technische Universität Dortmund, Dortmund, Germany

¹⁵ Max-Planck-Institut für Kernphysik (MPIK), Heidelberg, Germany

¹⁶ Physikalisches Institut, Ruprecht-Karls-Universität Heidelberg, Heidelberg, Germany

¹⁷ School of Physics, University College Dublin, Dublin, Ireland

¹⁸ INFN Sezione di Bari, Bari, Italy

¹⁹ INFN Sezione di Bologna, Bologna, Italy

²⁰ INFN Sezione di Ferrara, Ferrara, Italy

²¹ INFN Sezione di Firenze, Firenze, Italy

- ²² INFN Laboratori Nazionali di Frascati, Frascati, Italy
- ²³ INFN Sezione di Genova, Genova, Italy
- ²⁴ INFN Sezione di Milano-Bicocca, Milano, Italy
- ²⁵ INFN Sezione di Milano, Milano, Italy
- ²⁶ INFN Sezione di Cagliari, Monserrato, Italy
- ²⁷ Università degli Studi di Padova, Università e INFN, Padova, Padova, Italy
- ²⁸ INFN Sezione di Pisa, Pisa, Italy
- ²⁹ INFN Sezione di Roma Tor Vergata, Roma, Italy
- ³⁰ INFN Sezione di Roma La Sapienza, Roma, Italy
- ³¹ Nikhef National Institute for Subatomic Physics, Amsterdam, Netherlands
- ³² Nikhef National Institute for Subatomic Physics and VU University Amsterdam, Amsterdam, Netherlands
- ³³ Henryk Niewodniczanski Institute of Nuclear Physics Polish Academy of Sciences, Kraków, Poland
- ³⁴ AGH - University of Science and Technology, Faculty of Physics and Applied Computer Science, Kraków, Poland
- ³⁵ National Center for Nuclear Research (NCBJ), Warsaw, Poland
- ³⁶ Horia Hulubei National Institute of Physics and Nuclear Engineering, Bucharest-Magurele, Romania
- ³⁷ Petersburg Nuclear Physics Institute NRC Kurchatov Institute (PNPI NRC KI), Gatchina, Russia
- ³⁸ Institute of Theoretical and Experimental Physics NRC Kurchatov Institute (ITEP NRC KI), Moscow, Russia, Moscow, Russia
- ³⁹ Institute of Nuclear Physics, Moscow State University (SINP MSU), Moscow, Russia
- ⁴⁰ Institute for Nuclear Research of the Russian Academy of Sciences (INR RAS), Moscow, Russia
- ⁴¹ Yandex School of Data Analysis, Moscow, Russia
- ⁴² Budker Institute of Nuclear Physics (SB RAS), Novosibirsk, Russia
- ⁴³ Institute for High Energy Physics NRC Kurchatov Institute (IHEP NRC KI), Protvino, Russia, Protvino, Russia
- ⁴⁴ ICCUB, Universitat de Barcelona, Barcelona, Spain
- ⁴⁵ Instituto Galego de Física de Altas Enerxías (IGFAE), Universidade de Santiago de Compostela, Santiago de Compostela, Spain
- ⁴⁶ Instituto de Física Corpuscular, Centro Mixto Universidad de Valencia - CSIC, Valencia, Spain
- ⁴⁷ European Organization for Nuclear Research (CERN), Geneva, Switzerland
- ⁴⁸ Institute of Physics, Ecole Polytechnique Fédérale de Lausanne (EPFL), Lausanne, Switzerland
- ⁴⁹ Physik-Institut, Universität Zürich, Zürich, Switzerland
- ⁵⁰ NSC Kharkiv Institute of Physics and Technology (NSC KIPT), Kharkiv, Ukraine
- ⁵¹ Institute for Nuclear Research of the National Academy of Sciences (KINR), Kyiv, Ukraine
- ⁵² University of Birmingham, Birmingham, United Kingdom
- ⁵³ H.H. Wills Physics Laboratory, University of Bristol, Bristol, United Kingdom
- ⁵⁴ Cavendish Laboratory, University of Cambridge, Cambridge, United Kingdom
- ⁵⁵ Department of Physics, University of Warwick, Coventry, United Kingdom
- ⁵⁶ STFC Rutherford Appleton Laboratory, Didcot, United Kingdom
- ⁵⁷ School of Physics and Astronomy, University of Edinburgh, Edinburgh, United Kingdom
- ⁵⁸ School of Physics and Astronomy, University of Glasgow, Glasgow, United Kingdom
- ⁵⁹ Oliver Lodge Laboratory, University of Liverpool, Liverpool, United Kingdom
- ⁶⁰ Imperial College London, London, United Kingdom
- ⁶¹ Department of Physics and Astronomy, University of Manchester, Manchester, United Kingdom
- ⁶² Department of Physics, University of Oxford, Oxford, United Kingdom
- ⁶³ Massachusetts Institute of Technology, Cambridge, MA, United States
- ⁶⁴ University of Cincinnati, Cincinnati, OH, United States
- ⁶⁵ University of Maryland, College Park, MD, United States
- ⁶⁶ Los Alamos National Laboratory (LANL), Los Alamos, United States
- ⁶⁷ Syracuse University, Syracuse, NY, United States
- ⁶⁸ Laboratory of Mathematical and Subatomic Physics, Constantine, Algeria, associated to ²

- ⁶⁹ *School of Physics and Astronomy, Monash University, Melbourne, Australia, associated to* ⁵⁵
⁷⁰ *Pontificia Universidade Católica do Rio de Janeiro (PUC-Rio), Rio de Janeiro, Brazil, associated to* ²
⁷¹ *Guangdong Provincial Key Laboratory of Nuclear Science, Institute of Quantum Matter, South China Normal University, Guangzhou, China, associated to* ³
⁷² *School of Physics and Technology, Wuhan University, Wuhan, China, associated to* ³
⁷³ *Departamento de Física, Universidad Nacional de Colombia, Bogota, Colombia, associated to* ¹²
⁷⁴ *Universität Bonn - Helmholtz-Institut für Strahlen und Kernphysik, Bonn, Germany, associated to* ¹⁶
⁷⁵ *Institut für Physik, Universität Rostock, Rostock, Germany, associated to* ¹⁶
⁷⁶ *Van Swinderen Institute, University of Groningen, Groningen, Netherlands, associated to* ³¹
⁷⁷ *Universiteit Maastricht, Maastricht, Netherlands, associated to* ³¹
⁷⁸ *National Research Centre Kurchatov Institute, Moscow, Russia, associated to* ³⁸
⁷⁹ *National University of Science and Technology "MISIS", Moscow, Russia, associated to* ³⁸
⁸⁰ *National Research University Higher School of Economics, Moscow, Russia, associated to* ⁴¹
⁸¹ *National Research Tomsk Polytechnic University, Tomsk, Russia, associated to* ³⁸
⁸² *University of Michigan, Ann Arbor, United States, associated to* ⁶⁷
⁸³ *AGH - University of Science and Technology, Faculty of Computer Science, Electronics and Telecommunications, Kraków, Poland*

- ^a *Universidade Federal do Triângulo Mineiro (UFMT), Uberaba-MG, Brazil*
^b *Laboratoire Leprince-Ringuet, Palaiseau, France*
^c *P.N. Lebedev Physical Institute, Russian Academy of Science (LPI RAS), Moscow, Russia*
^d *Università di Bari, Bari, Italy*
^e *Università di Bologna, Bologna, Italy*
^f *Università di Cagliari, Cagliari, Italy*
^g *Università di Ferrara, Ferrara, Italy*
^h *Università di Genova, Genova, Italy*
ⁱ *Università di Milano Bicocca, Milano, Italy*
^j *Università di Roma Tor Vergata, Roma, Italy*
^k *AGH - University of Science and Technology, Faculty of Computer Science, Electronics and Telecommunications, Kraków, Poland*
^l *DS4DS, La Salle, Universitat Ramon Llull, Barcelona, Spain*
^m *Hanoi University of Science, Hanoi, Vietnam*
ⁿ *Università di Padova, Padova, Italy*
^o *Università di Pisa, Pisa, Italy*
^p *Università degli Studi di Milano, Milano, Italy*
^q *Università di Urbino, Urbino, Italy*
^r *Università della Basilicata, Potenza, Italy*
^s *Scuola Normale Superiore, Pisa, Italy*
^t *Università di Modena e Reggio Emilia, Modena, Italy*
^u *Università di Siena, Siena, Italy*
^v *MSU - Iligan Institute of Technology (MSU-IIT), Iligan, Philippines*
^w *Novosibirsk State University, Novosibirsk, Russia*
^x *INFN Sezione di Trieste, Trieste, Italy*
^y *Universidad Nacional Autónoma de Honduras, Tegucigalpa, Honduras*